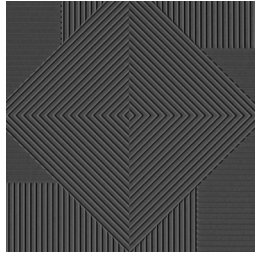


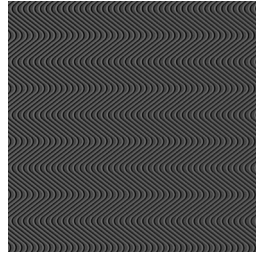
Chizel® Black MDF Panels



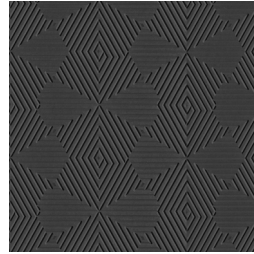
Expanding another storied collection for three-dimensional and textured panels, **Chizel® Black MDF Panels** joins **Chizel® Wood Panels** and **Chizel® MDF Panels** in a large format, moisture-resistant, black MDF sheet with a balanced back, creating a high level of design and craftsmanship in nine enhanced patterns for a budget-driven project that envisions an inimitable aesthetic eliciting interest and beauty.



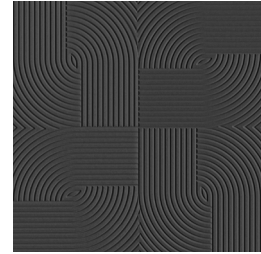
WPFSN502



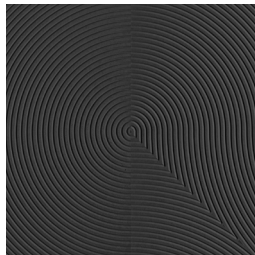
WPFSN503



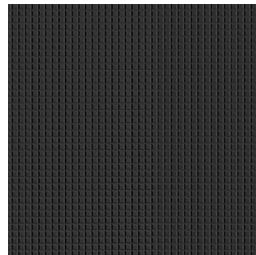
WPFSN504



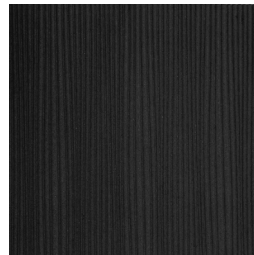
WPFSN505



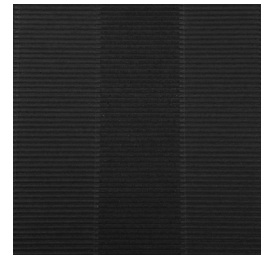
WPFSN506



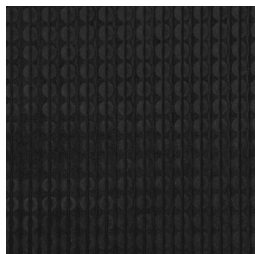
WPFSN507



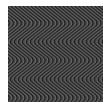
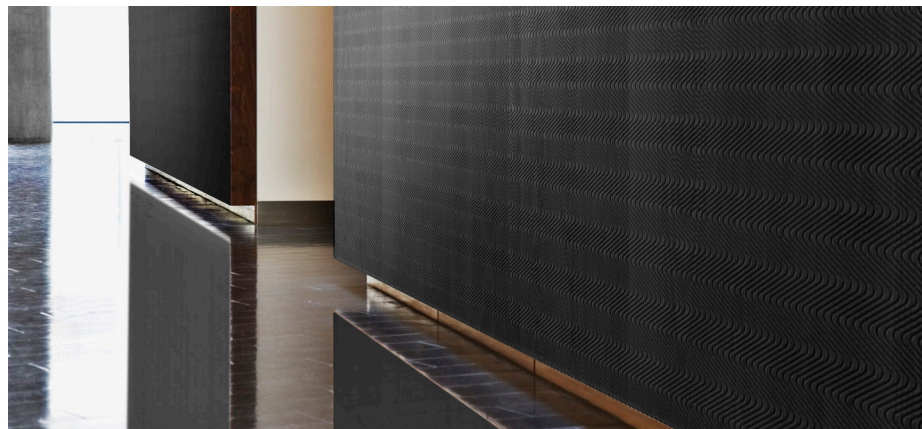
WPFSN508



WPFSN509



WPFSN510



Installation Photo

Featuring Chizel® Black MDF Panels - WPFSN503

View collection web page for the complete offering including additional product options, corresponding Spec ID# and updates.

SPECIFICATIONS

SIZE: 47.25" x 94.5" with a 2' x 2' nominal repeat

THICKNESS: 12.5mm overall including backing

FINISH: Routed MDF

CONSTRUCTION: 5/8" MDF with a balanced backer

APPLICATION: Walls, Architectural Millwork, Furniture and Fixture Components, Doors

INSTALLATION: Z-Clip

- CARB Compliant; TSCA Title VI Certified; no added formaldehyde
- Can contribute to LEED®
- Class A Fire Rating
- In Stock products are subject to availability
- Please note that variations in color and texture may occur due to the nature of the material