

Chizel[®] MDF Panels

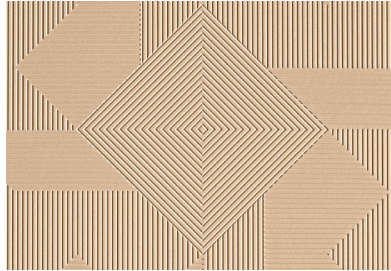
UPDATED ↻



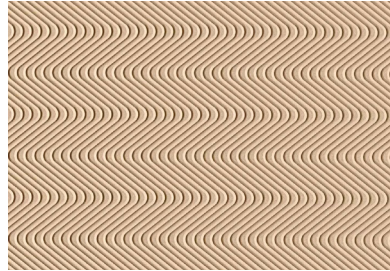
In Stock



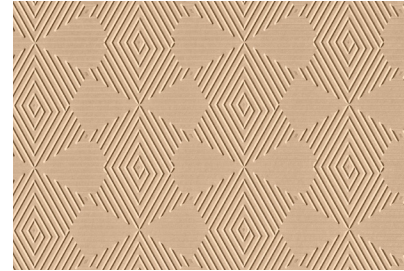
Chizel[®] MDF Panels is the next generation of the acclaimed **Chizel[®] Wood Panels**, now available in nine cost-effective and innovative patterns, affording the opportunity to incorporate a highly stylized design with natural textures, allowing for a trend making statement.



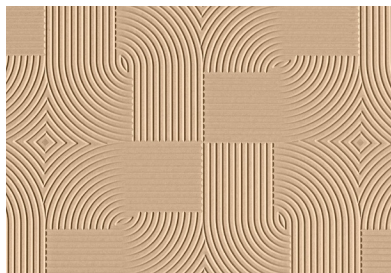
WPFSN248



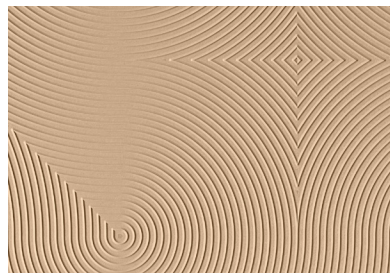
WPFSN249



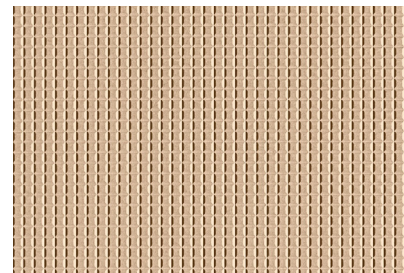
WPFSN250



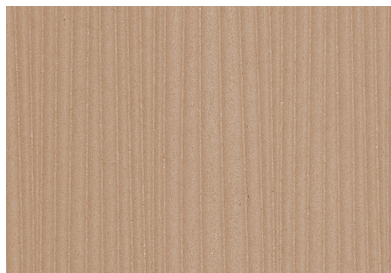
WPFSN251



WPFSN252



WPFSN255



WPFSN253



WPFSN254



WPFSN256

View collection web page for the complete offering including additional product options, corresponding Spec ID# and updates.

SPECIFICATIONS

SIZE: 47.25" x 94.5" with a 2' x 2' nominal repeat

THICKNESS: 3/4" overall including backing

FINISH: MDF only: Routed MDF

SPECIES: Wood Veneer: Ash

CONSTRUCTION: 5/8" balanced MDF substrate or available in an MDF option only

APPLICATION: Walls, Architectural Millwork, Furniture and Fixture Components, Doors

INSTALLATION: Z-Clip

- Can contribute to LEED[®]
- Class A Fire Rating **upon request**
- In Stock products are subject to availability
- Please note that variations in color and texture may occur due to the nature of the material