



Composition Cork

*Expanded Natural, Visually
Pleasing + Acoustical Collections*





Visit archsystems.com for the full line of interior finishes, request samples and our digital product catalog; View a gallery of global projects and purchase in stock materials.

Contents



- Introduction to ASI | Architectural Systems, Inc.
- Composition Cork - Apex
- Composition Cork - Bark
- Composition Cork - Cadence **NEW**
- Composition Cork - Metallic Stone
- Composition Cork - Motion **NEW**
- Composition Cork - Sequence **NEW**
- Composition Cork - Sheets
- Composition Cork - Spatial **NEW**
- Composition Cork - Tiles
- Acoustical Cork **NEW**
 - Perforated
 - Weave
- Where to Find Technical Information
- Inspirational Project Photos
- Discover the ASI Advantage®

What We Are About



ASI | Architectural Systems, Inc. is a leading global resource for innovative, distinctive and sustainable interior finishes.

Foremost architects and designers, along with the broad base of decision makers across all market segments collaborate with ASI for their material expertise, project management from start to finish, material take-offs/on-site support, commitment to service, product solutions, custom capabilities and a robust range of finishes for **wall surfaces, flooring and more...**

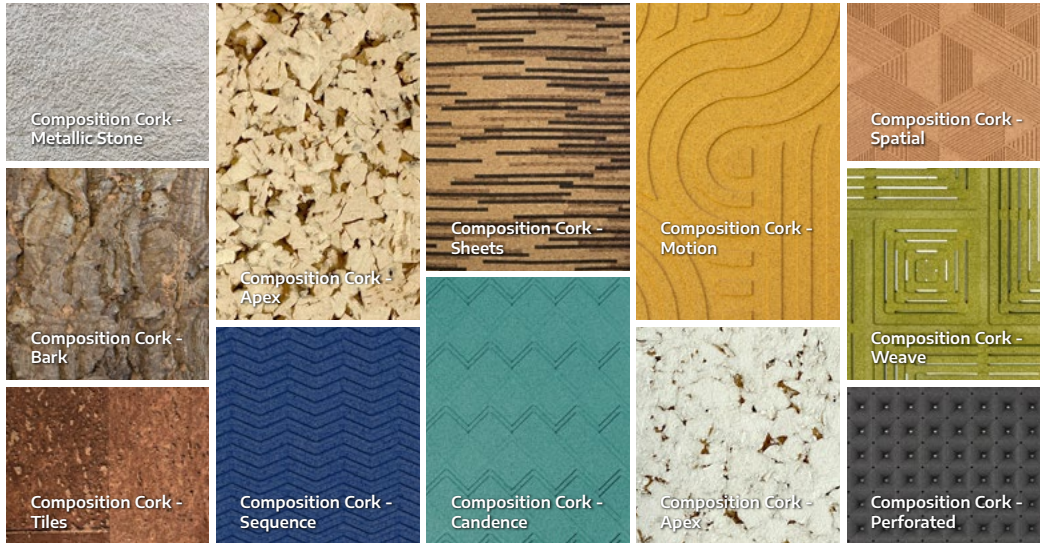
ASI curates dimensional wood panels, high-performing hardwoods, luxury vinyl and porcelain plus natural stone and decorative surfacing material to provide the right aesthetics for your design vision and budget **with the added ease of finding it all in one place!**



Visit us in our new space where we welcome the opportunity to collaborate with you!

256 W 36th Street , 10th Floor, New York, NY 10001

Our propriety and expanded assemblage of Cork Tiles consists of exceptional, captivating collections **Apex, Bark, Cadence, Metallic Stone, Motion, Sequence, Sheets, Spatial** and **Tiles** + two Acoustical Cork patterns are now available: **Perforated** and **Weave**. Each grouping has been curated to meet the demand for natural, visually pleasing and acoustical materials.

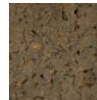
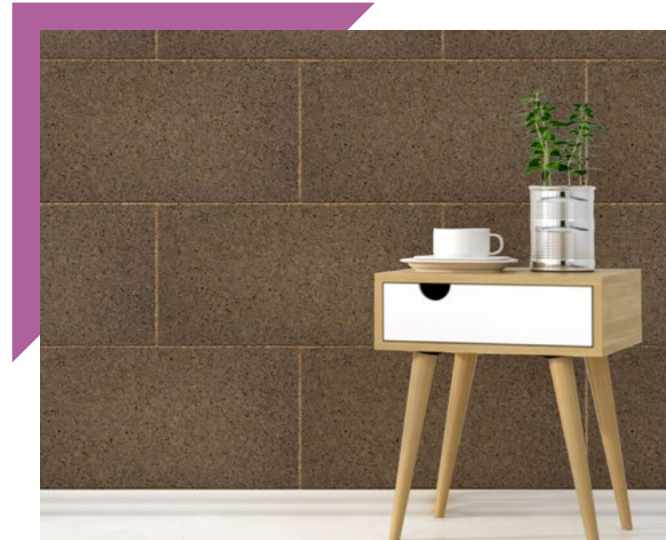


Composition Cork - Apex

Made from renewable cork bark, **Apex** expresses a 3D-effect with a sustainable sensibility and with a warm tonal color palette in six planks with a beveled edge for a new spin on cork.



HEALTH AND WELLNESS: The inherent properties in cork provide a naturally bacterial resistance



Installation Photo

Featuring Composition Cork -
Apex - Cinza Escuro - WPCRK005

Composition Cork - Apex



SPECIFICATIONS:



SIZE: 11.81" x 23.62" (300mm x 600mm)

THICKNESS: 0.39" (10mm)

FINISH: Factory Sealed

INSTALLATION: Adhere to surface with construction adhesive

CONSTRUCTION: Natural 100% renewable cork bark with natural color pigments and beveled edges

PACKAGING: 30 pieces per box - 58.13 SF

HEALTH AND WELLNESS: The inherent properties in cork provide a naturally bacterial resistance

- Low VOC Emissions
- Sound Absorbing, NRC = 0.15
- Can contribute to LEED®
- Please note that variations in color and texture may occur due to the nature of the material



Blanco - WPCRK001



Marfim - WPCRK002



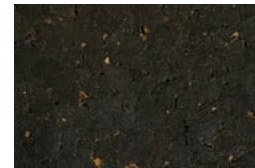
Natural - WPCRK003



Cinza Claro - WPCRK004



Cinza Escuro - WPCRK005



Preto - WPCRK025

[View Collection](#)

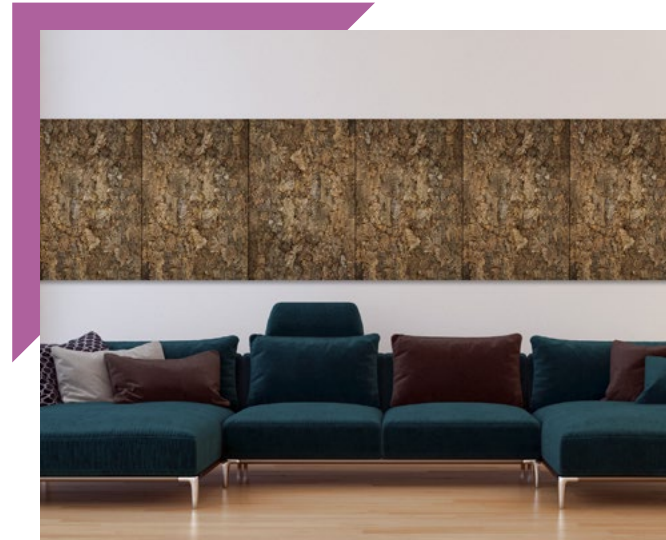


Composition Cork - Bark

Elevating the balance between performance driven finishes and handcrafted statement making appeal, **Composition Cork - Bark** is the short answer with two options of renewable cork oak bellies, Pulp and Sapling, that have been precleaned and treated for an unmistakably noise diminishing and impactful feature wall.



HEALTH AND WELLNESS: The inherent properties in cork provide a naturally bacterial resistance



Installation Photo

Featuring Composition Cork -
Bark - Sapling - WPCRK008

Composition Cork - Bark

SPECIFICATIONS:

SIZE: 11.81" x 23.62" (300mm x 600mm), 23.62" x 35.43" (600mm x 900mm);
Spec ID#'s are listed for 11.81" x 23.62"

THICKNESS: 1" nominal (25mm)

FINISH: Factory Sealed

INSTALLATION: Adhere to surface with construction adhesive
or mechanically fastened

CONSTRUCTION: Natural 100% renewable cork bark pre-cleaned and treated

PACKAGING: 11.81" x 23.62": 10 pieces per box - 19.38 SF; 23.62" x 35.43":
10 pieces per box - 58.13 SF

HEALTH AND WELLNESS: The inherent properties in cork provide
a naturally bacterial resistance

- No VOC emissions
- Sound Absorbing, NRC = 0.15
- Can contribute to LEED®
- Please note that variations in color and texture may occur due to the nature of the material



Pulp - WPCRK006



Sapling - WPCRK008

[View Collection](#)

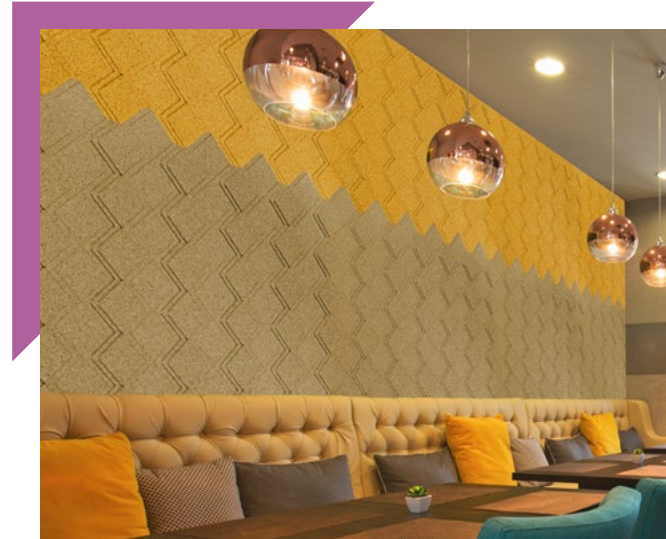


Composition Cork - Cadence

Cadence is a three-dimensional intricately shaped rectangular design that expresses a rhythmic flow. Presented in 14 impactful colors which range from neutrals to vibrant, with sound absorbing characteristics and sustainable attributes, consider this an informed choice when selecting wall surfacing options.



HEALTH AND WELLNESS: The inherent properties in cork provide a naturally bacterial resistance



Installation Photo

Featuring Composition Cork - Cadence -
Amarelo - WPCRK055; Branco - WPCRK047

Composition Cork - Cadence

SPECIFICATIONS:



SIZE: 27 11/16" x 19"

THICKNESS: 15/32"

FINISH: Factory Sealed

INSTALLATION: Adhere to surface with construction adhesive

CONSTRUCTION: Natural 100% renewable cork bark

PACKAGING: 10 pieces per box - 36.53 SF

HEALTH AND WELLNESS: The inherent properties in cork provide a naturally bacterial resistance

- Low VOC emissions
- Sound Absorbing, NRC = 0.3
- Can contribute to LEED®
- Please note that variations in color and texture may occur due to the nature of the material



Bege
WPCRK046



Branco
WPCRK047



Pardo
WPCRK048



Cinza
WPCRK049



Preto
WPCRK050



Marrom
WPCRK051



Bordo
WPCRK052



Corado
WPCRK053



Cobre
WPCRK054



Amarelo
WPCRK055



Celeste
WPCRK056



Verdura
WPCRK057



Ciano
WPCRK058



Tropa
WPCRK059

[View Collection](#)

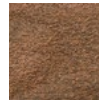


Composition Cork - Metallic Stone

Taking a twist on a traditional material, **Composition Cork - Metallic Stone** is available in six hues infused with vibrant metallic pigments and two mixed sizes for design flexibility and an unexpected direction in punctuating ecological acoustical aesthetics.



HEALTH AND WELLNESS: The inherent properties in cork provide a naturally bacterial resistance



Installation Photo

Featuring Composition Cork -
Metallic Stone - Copper - WPCRK012

Composition Cork - Metallic Stone

SPECIFICATIONS:

SIZE: 3.93" x 15.74" and 7.87" x 15.74"

THICKNESS: 0.27" - 0.55" (7mm to 14mm)

FINISH: Factory Sealed

INSTALLATION: Adhere to surface with construction adhesive

CONSTRUCTION: Natural 100% rapidly renewable cork bark with metallic pigments

PACKAGING: Mixed box with both sizes

HEALTH AND WELLNESS: The inherent properties in cork provide a naturally bacterial resistance

- No VOC emissions
- Class B Fire Rated
- Can contribute to LEED®
- Please note that variations in color and texture may occur due to the nature of the material



White - WPCRK010



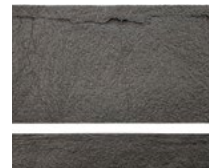
Green - WPCRK011



Copper - WPCRK012



Blue - WPCRK013



Grey - WPCRK014



Black - WPCRK015

[View Collection](#)

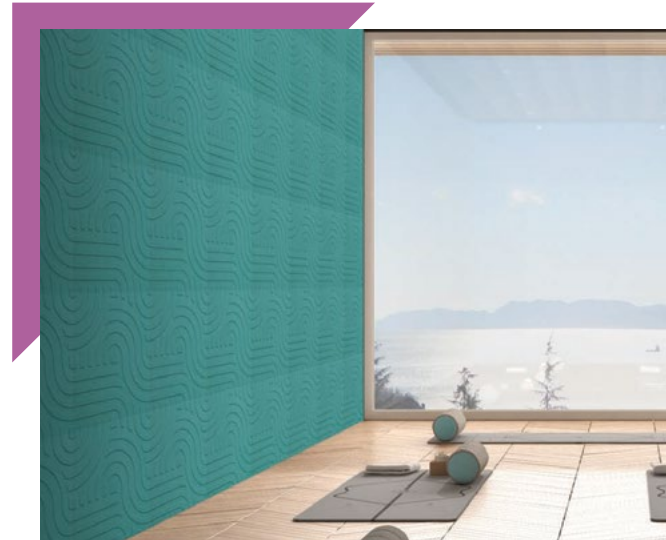


Composition Cork - Motion

Inspiring warmth and movement with its dramatic detail, **Motion** uplifts Cork Tiles to a new level of possibilities for your design. Sound absorbing, low VOC emissions and providing a natural bacterial resistance this ecological and visual choice becomes a dominant feature wall in every environment.



HEALTH AND WELLNESS: The inherent properties in cork provide a naturally bacterial resistance



Installation Photo

Featuring Composition Cork -
Motion WPCRK079

Composition Cork - Motion

SPECIFICATIONS:



SIZE: 19 ¹³/₁₆" x 19 ³/₄"

THICKNESS: ⁹/₃₂"

FINISH: Factory Sealed

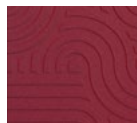
INSTALLATION: Adhere to surface with construction adhesive

CONSTRUCTION: Natural 100% renewable cork bark

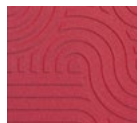
PACKAGING: 10 pieces per box - 27.173 SF

HEALTH AND WELLNESS: The inherent properties in cork provide a naturally bacterial resistance

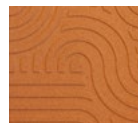
- Low VOC emissions
- Sound Absorbing, NRC = 0.3
- Can contribute to LEED®
- Please note that variations in color and texture may occur due to the nature of the material



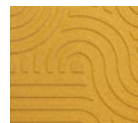
Bordo
WPCRK074



Corado
WPCRK075



Cobre
WPCRK076



Amarelo
WPCRK077



Tropa
WPCRK078



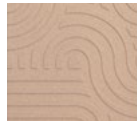
Ciano
WPCRK079



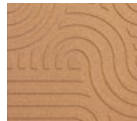
Verdura
WPCRK080



Celeste
WPCRK081



Branco
WPCRK082



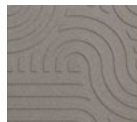
Bege
WPCRK083



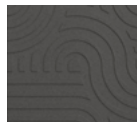
Marrom
WPCRK084



Preto
WPCRK087



Pardo
WPCRK085



Cinza
WPCRK086

[View Collection](#)

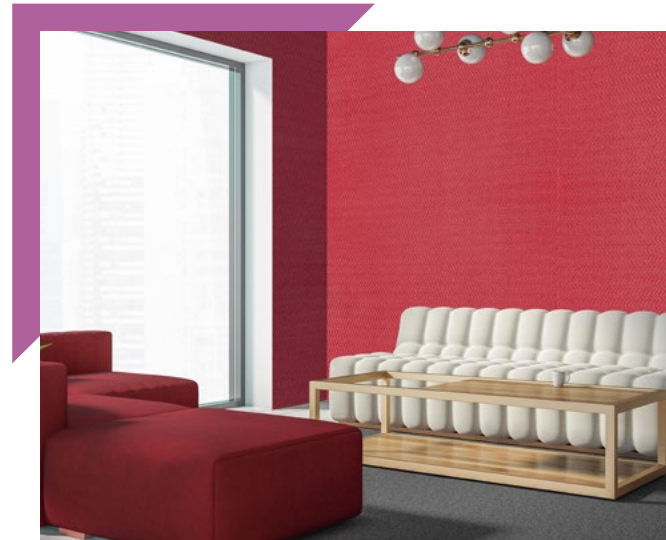


Composition Cork - Sequence

The distinctive dimensional layer of pattern in **Sequence**, offered in a restyled color palette and rectangular configuration showcase a logically related order of an exceptional looking surfacing material that also delivers health and wellness features and benefits.



HEALTH AND WELLNESS: The inherent properties in cork provide a naturally bacterial resistance



Installation Photo

Featuring Composition Cork - Sequence
WPCRK038 and WPCRK039

Composition Cork - Sequence

SPECIFICATIONS:



SIZE: 27 ½" x 15 ½"

THICKNESS: ⅜"

FINISH: Factory Sealed

INSTALLATION: Adhere to surface with construction adhesive

CONSTRUCTION: Natural 100% renewable cork bark

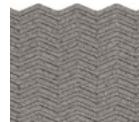
PACKAGING: 10 pieces per box - 29.6 SF

HEALTH AND WELLNESS: The inherent properties in cork provide a naturally bacterial resistance

- Low VOC emissions
- Sound Absorbing, NRC = 0.3
- Can contribute to LEED®
- Please note that variations in color and texture may occur due to the nature of the material



Marrom
WPCRK032



Pardo
WPCRK033



Cinza
WPCRK034



Preto
WPCRK035



Branco
WPCRK036



Bege
WPCRK037



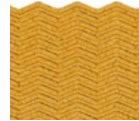
Bordo
WPCRK038



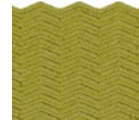
Corado
WPCRK039



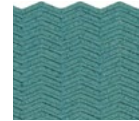
Cobre
WPCRK040



Amarelo
WPCRK041



Tropa
WPCRK042



Ciano
WPCRK043



Verdura
WPCRK044



Celeste
WPCRK045

[View Collection](#)



Composition Cork - Sheets

See anew the best edit of **Composition Cork - Sheets** offered in 6 colorations with a nature inspired ease constructed from rapidly renewable cork bark and postindustrial product. This sound absorbing, sustainable collection is lightweight and durable yet designed to reflect a time honored past with a modern day surfacing selection.



HEALTH AND WELLNESS: The inherent properties in cork provide a naturally bacterial resistance



Installation Photo

Featuring Composition Cork - Sheets -
Bande - WPCRK016; Madrée - WPCRK017

Composition Cork - Sheets



SPECIFICATIONS:



SIZE: 23.62" x 35.43"

THICKNESS: .23" (6mm)

FINISH: Factory Sealed

INSTALLATION: Adhere to surface with construction adhesive

CONSTRUCTION: WPCRK016-WPCRK018: Natural 100% renewable cork bark;
WPCRK026-WPCRK028: Natural 100% renewable cork bark - in combination with post-industrial consumer EVA foam

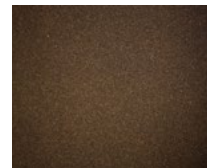
PACKAGING: 10 pieces per box - 244.13 SF

HEALTH AND WELLNESS: The inherent properties in cork provide a naturally bacterial resistance

- No VOC emissions
- Sound Absorbing, NRC = 0.15
- Can contribute to LEED®
- Please note that variations in color and texture may occur due to the nature of the material



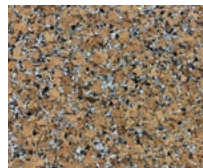
Bande - WPCRK016



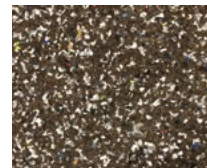
Madrée - WPCRK017



Tacheter - WPCRK018



Lapin - WPCRK026



Hyène - WPCRK027



Guépard - WPCRK028

[View Collection](#)



Composition Cork - Spatial



An embedded geometric imprint with a continuous form in **Spatial**, rounds out the latest Composition Cork additions. Available in an array of hues and made from 100% natural renewable cork bark, this sound absorbing and dynamic new collection delivers aesthetic and sustainable solutions when crafting a sense of place.



HEALTH AND WELLNESS: The inherent properties in cork provide a naturally bacterial resistance



Installation Photo

Featuring Composition Cork - Spatial -
WPCRK063, WPCRK070 and WPCRK066

Composition Cork - Spatial

SPECIFICATIONS:



SIZE: 24 ¹³/₁₆" x 15 ⁹/₁₆"

THICKNESS: ⁹/₃₂"

FINISH: Factory Sealed

INSTALLATION: Adhere to surface with construction adhesive

CONSTRUCTION: Natural 100% renewable cork bark

PACKAGING: 10 pieces per box - 26.82 SF

HEALTH AND WELLNESS: The inherent properties in cork provide a naturally bacterial resistance

- Low VOC emissions
- Sound Absorbing, NRC = 0.3
- Can contribute to LEED®
- Please note that variations in color and texture may occur due to the nature of the material



Marrom
WPCRK060



Bordo
WPCRK061



Corado
WPCRK062



Cobre
WPCRK063



Amarelo
WPCRK064



Bege
WPCRK065



Branco
WPCRK066



Pardo
WPCRK067



Cinza
WPCRK068



Preto
WPCRK069



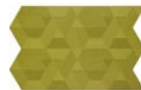
Celeste
WPCRK070



Verdura
WPCRK071



Ciano
WPCRK072



Tropa
WPCRK073

[View Collection](#)



Composition Cork - Tiles

Consider **Composition Cork - Tiles** when the design brief calls for transcending conventions of time and place with a decorative and green product. Layered construction with renewable cork bark veneers and color pigments, these six neutral and natural colors are also water repellent and sound absorbing.



HEALTH AND WELLNESS: The inherent properties in cork provide a naturally bacterial resistance



Installation Photo

Featuring Composition Cork -
Tiles - Griseo - WPCRK023

Composition Cork - Tiles



SPECIFICATIONS:



SIZE: 11.81" x 23.62"

THICKNESS: .157" (4mm)

FINISH: Factory Sealed

INSTALLATION: Adhere to surface with construction adhesive

CONSTRUCTION: Natural 100% renewable cork bark veneer with color pigments

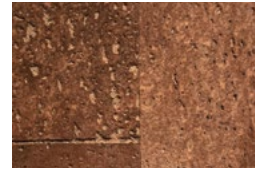
PACKAGING: 60 pieces per box - 116.25 SF

HEALTH AND WELLNESS: The inherent properties in cork provide a naturally bacterial resistance

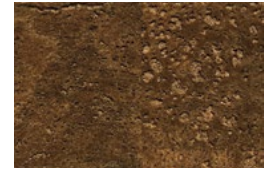
- No VOC emissions
- Sound Absorbing, NRC = 0.15
- Can contribute to LEED®
- Please note that variations in color and texture may occur due to the nature of the material



Naturalis - WPCRK019



Rubigo - WPCRK020



Brunneis - WPCRK021



Viridis - WPCRK022



Griseo - WPCRK023



Onychinus - WPCRK024

[View Collection](#)



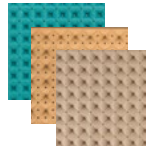
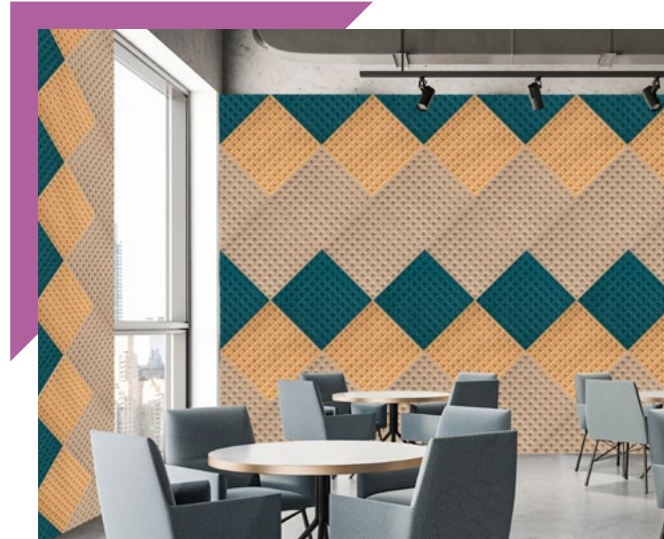
Cork Acoustical - Perforated



Intended to control and direct the way sound moves, **Perforated** is an intricate and versatile design that allows for enhanced visual interest, diffusing sound and harsh light on ceiling applications especially and allows for you to monitor the way vibrations affect the way an environment is experienced. In a robust 14 color offering these square acoustical tiles are a go to option for keeping areas quieter in open spaces.



HEALTH AND WELLNESS: The inherent properties in cork provide a naturally bacterial resistance



Installation Photo

Featuring Cork Acoustical - Perforated
WPCRK089, WPCRK097, and WPCRK098

Cork Acoustical - Perforated

SPECIFICATIONS:



SIZE: 19 $\frac{5}{16}$ " x 19 $\frac{5}{16}$ "

THICKNESS: 1 $\frac{3}{16}$ "

FINISH: Factory Sealed

INSTALLATION: Adhere to surface with construction adhesive / clips

CONSTRUCTION: Natural 100% renewable cork bark

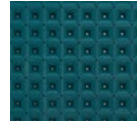
PACKAGING: 4 pieces per box - 10.36 SF

HEALTH AND WELLNESS: The inherent properties in cork provide a naturally bacterial resistance

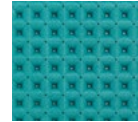
- Low VOC emissions
- Sound Absorbing, NRC = 0.7
- Can contribute to LEED®
- Please note that variations in color and texture may occur due to the nature of the material



Celeste
WPCRK088



Verdura
WPCRK089



Ciano
WPCRK090



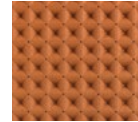
Tropa
WPCRK091



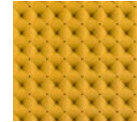
Bordo
WPCRK092



Corado
WPCRK093



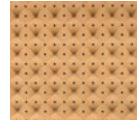
Cobre
WPCRK094



Amarelo
WPCRK095



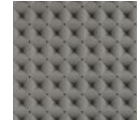
Marrom
WPCRK096



Bege
WPCRK097



Branco
WPCRK098



Pardo
WPCRK099



Cinza
WPCRK100



Preto
WPCRK101

[View Collection](#)

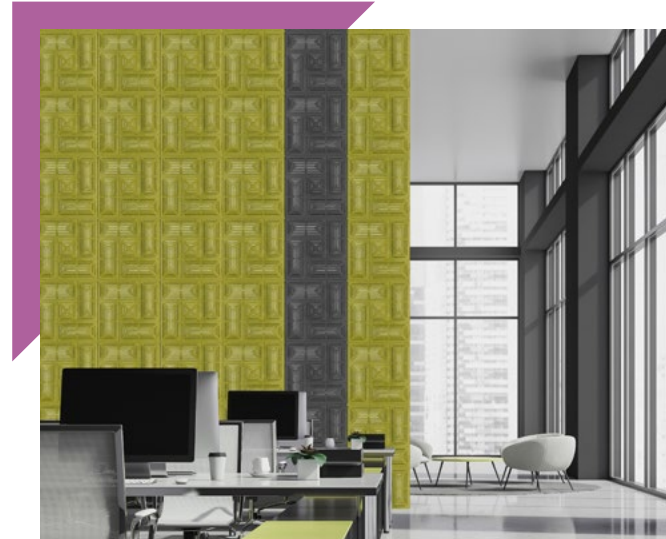


Cork Acoustical - Weave

Rejuvenate the space with a pop of 14 color choices in the **Weave** motif, an intertwining design that combines components to make a woven detail creating balance in the transmission and reception of sound. The natural appearance of these organic Cork Tiles harvested from the bark of the oak tree share meaning on the emphasis of functionality and aesthetics.



HEALTH AND WELLNESS: The inherent properties in cork provide a naturally bacterial resistance



Installation Photo

Featuring Cork Acoustical - Weave
WPCRK109 and WPCRK114

Cork Acoustical - Weave

SPECIFICATIONS:



SIZE: 19 3/4" x 19 3/4"

THICKNESS: 1 3/16"

FINISH: Factory Sealed

INSTALLATION: Adhere to surface with construction adhesive / clips

CONSTRUCTION: Natural 100% renewable cork bark

PACKAGING: 4 pieces per box - 10.84 SF

HEALTH AND WELLNESS: The inherent properties in cork provide a naturally bacterial resistance

- Low VOC emissions
- Sound Absorbing, NRC = 0.8
- Can contribute to LEED®
- Please note that variations in color and texture may occur due to the nature of the material



Marrom
WPCRK102



Bordo
WPCRK103



Corado
WPCRK104



Cobre
WPCRK105



Celeste
WPCRK106



Verdura
WPCRK107



Ciano
WPCRK108



Tropa
WPCRK109



Amarelo
WPCRK110



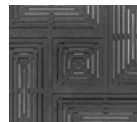
Bege
WPCRK111



Branco
WPCRK112



Preto
WPCRK113



Cinza
WPCRK114



Pardo
WPCRK115

[View Collection](#)



Where to Find Technical Information

Refer to Collection Product Page on our website, archsystems.com/products/search/cork-tiles.
Scroll down, and you will find specifications, installation method, maintenance, warranty, plus technical data.



Installation Method

Composition Cork - Motion

Inspiring warmth and movement with its dramatic detail, **Motion** uplifts Cork Tiles to a new level of possibilities for your design. Sound absorbing, low VOC emissions and providing a natural bacterial resistance this ecological and visual choice becomes a dominant feature wall in every environment.



Collection Specifications and Downloads

INSTALLATION PREPARATION:

- Do not install with temperatures below 60° F (15°C). Composition Cork - Apex panels should be kept at the same temperature as the room conditions both prior to and during the installation process.
- The panels need to acclimate for at least **48 hours** prior to installation. This involves opening the packs of cork so that the panels can achieve a similar moisture/humidity level as the environment in which it can be installed. If the cork is not acclimated prior to installation, either gapping or expansion can occur.
- It is advisable, though not required, to paint the walls in a similar color to the cork to material being installed so if movement does occur, color contrast is kept to a minimum.
- Walls need to be clean and smooth, free of dirt, waxes, polishes, old adhesive, paint and voids. Follow directions on adhesive manufacturer's label to complete installation.
- NOTE:** Cork is a natural product that includes voids, gaps, and holes. Some bricks may have voids that go gully through the tile. These pieces can be used in less conspicuous portions of the installation (low or high), or pre-paint the wall (as referenced above).
- It is recommended that the cork panels are applied to primed or painted substrates as this will help ensure effective adhesion. When priming and painting, paint should be fully covered.

ADHESIVE:

Cork is a wood product and adheres well with most wood adhesives. That said, it is important that you choose an adhesive that will provide the adhesion needed based on the substrate it is applied to. (Please note: ineffective adhesion is not a product defect, nor a warrantable claim, and it is always recommended to test the adhesion of a product prior to its use). We highly recommend the use of a water-based contact cement due to the immediate bonding nature of the product. Should you have a substrate that is not suitable for water-based contact cement, please contact ASI | Architectural Systems, Inc. to find an adhesive replacement for your application.

Water-based contact cement is the recommended adhesive option (under normal substrate conditions).

Water-based contact cements set very quickly which allows one to start in the middle of the wall, as well as move the installation process in the most time effective manner. Wakol Loba D3540 is a recommended water-based contact cement that works well with cork. Walls should be primed and/or painted prior to use of the contact cement, with the topical coating be in a 'cured' state. (Please note: unprimed walls will absorb contact cement, diminishing its' effectiveness, and therefore this is not recommended).

FOLLOW THE MANUFACTURER'S INSTRUCTIONS ON THE CONTACT CEMENT SELECTED FOR THE INSTALLATION.

Again, please note that ineffective adhesion is not a product defect, nor a warrantable claim. Contact cement is generally applied to both the application substrate and the back of the cork pieces and left to dry (for a minimum of 45 minutes) prior to being suitable for the actual installation process to commence. Installing before the contact cement is fully dry (either on the wall substrate or on the cork pieces) will result in ineffective adhesion. Apply pressure to the tiles to ensure full bond adhesion.

INSTALLATION INSTRUCTIONS:

STEP 1:

Establish a level line (if installing horizontally) and a plumb (vertical) line to work from. Use a measuring tape, 4' level and a non-staining chalk line.

STEP 2:

Pre-lay or visually lay out the material before applying to the wall. The panels are 'tipped' for pigmentation, meaning both sides of the cork piece are considered 'finished' so visually select the side that is desirable (to be faced out). If using contact cement for adhesion, lay the 'back' side up and coat with contact cement per the manufacturer's instructions.



It may be helpful to pre-cut the pieces on the ground, as opposed to on the wall for vertical seam applications. Use a carpenter's knife or miter saw with sharp blade to cut material being careful not to damage edges.

STEP 3:

Make sure there is 100% coverage on adhesive on the back side of each piece, to ensure an effective bond. And, remember to follow the adhesive manufacturer's application instructions relative to set and open times. Poor adhesion of the cork to the substrate is not a product failure.

Where to Find Technical Information



Maintenance

Composition Cork - Apex is manufactured from natural cork bark applied to an agglomerate cork substrate layer which is then coated with a specific finish. The coating provides surface protection that aids in stain resistance and the clean ability of the product in any environmentally safe manner.

Stains should be removed as quickly as possible to eliminate any possible reaction between the staining agent and the product. Time is especially important for removing materials containing colors or solvents such as ball point pens, nail polish, lipstick, oil shampoo tints, paint, lacquer, enamel, and certain food items.

PRECAUTIONS: Excess soiling materials such as chewing gum, asphalt, crayon, paint, nail polish, or tar should be carefully scraped off prior to the application of other cleaning attempts.

CLEANING: The normal cleaning of the product should be done with a dry and soft lint-free cloth or dry sponge. If stained, a stronger cleaning is required. Rinse thoroughly with clean, clear water often to ensure the water remains clean and clear. After cleaning an area, be sure to dry with an absorbent cloth so it can be examined to ensure complete cleaning.

DEEP CLEANING: If more vigorous cleaning is needed, you can clean wall with BonaX surface available from your local hardware store or www.bona.com. ASI | Architectural Systems, Inc. further recommends using Terry Cloth to prevent scratching or marring of wall. For cleaning deeply embossed grains, you may vacuum with a clean vacuum cleaner brush (DO NOT use a vacuum with a "beater" bar).

NOTE:

- DO NOT use wet mops, wet scrubbers or steam cleaners as these products may cause irreversible discoloration and damages
- NEVER use abrasive cleaners or mix cleaning reagents together as violent reactions may occur when chemicals are mixed. Observe all label precaution when using any cleaning agents.

ADDING WEAR-RESISTANCE: Composition Cork - Apex can also be site-coated with a standard water-based urethane for added wear and stain resistance.

PROTECTING YOUR INVESTMENT: Your newly installed Composition Cork panels are made from natural wood fibers and therefore is subject to change from excessive moisture or nonconforming environmental conditions. Remove any standing or trapped water immediately, and maintain an indoor relative humidity level of 35-55% throughout the year.




Warranty

Structural Warranty: 10 years against delamination or separation as a result of a manufacturing defect when finished and maintained in accordance with manufacturer's installation instructions.



Technical Data

- Natural 100% rapidly renewable slab cork bark. Panels made from the removed trimmings from the cork, finalized with natural color pigments and beveled edges
- Lightweight, durable, stable and resilient, insulating panels, pin-board
- Product from Europe, Portugal
- **Sound absorption:** NRC = 0.15
- **LEED Points:** MRc4 - Recycled Content (100% recycled, post-industrial content)
- **Sustainability:**
 - MRc5 - Rapidly Renewable Materials IEQc4.4 - Low Emitting Materials - NAUF IDc1
 - Associated applicable points based on installation: IEQc4.1 - Low Emitting Materials: Adhesives and Sealants
 - IEQc4.2 - Low Emitting Materials: Paints and Coatings

The background features a white central area with decorative elements. In the top-left, there is a green triangle with a smaller pink triangle on top. In the top-right, there is a dark grey textured triangle. In the bottom-left, there is a brown and grey speckled textured triangle. In the bottom-right, there is a light grey triangle with a yellow triangle on top and a purple triangle on the left side.

Inspirational Project Photos



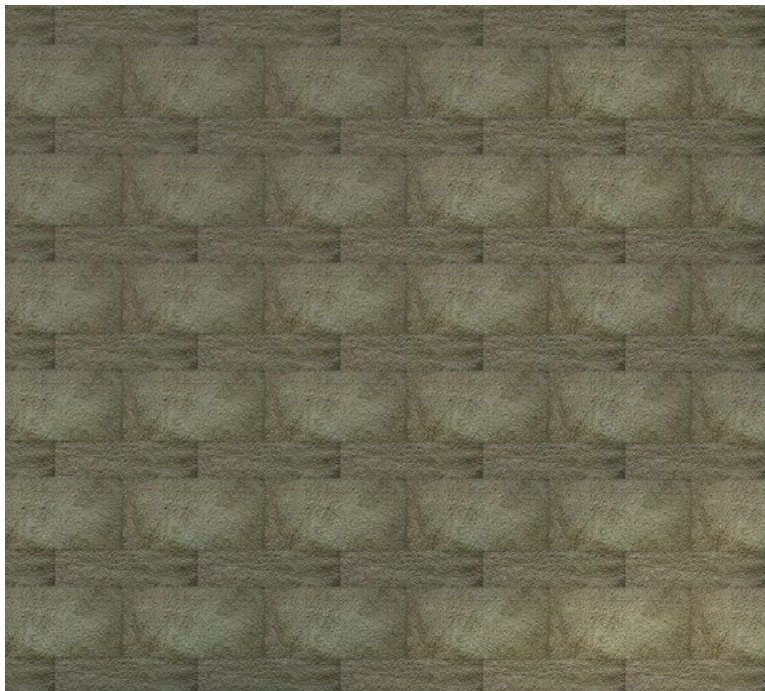
Installation Photo

Featuring Composition Cork – Spatial –
Cinza – WPCRK068

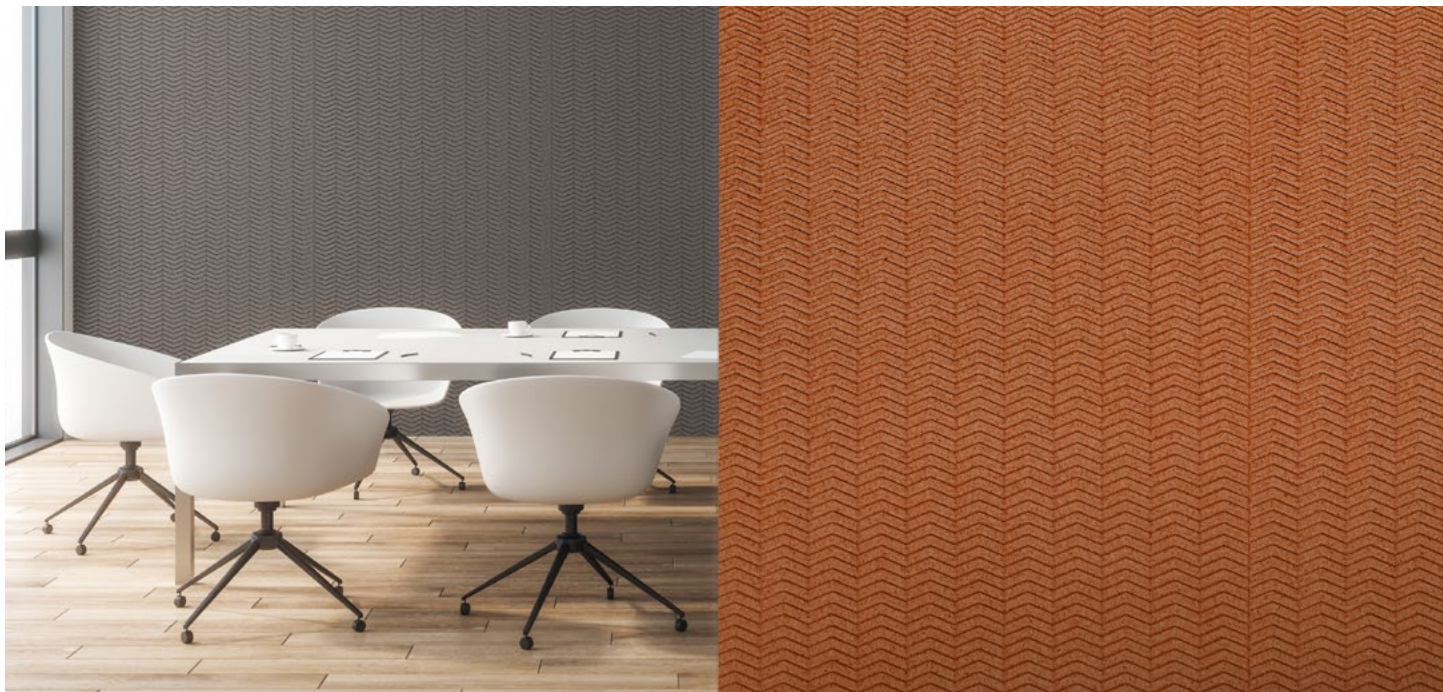


Installation Photo

Featuring Composition Cork –
Apex – Marfim – WPCRK002

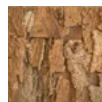


Installation Photo
Featuring Composition Cork –
Metallic Stone – Green – WPCRK011

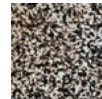


Installation Photo

Featuring Composition Cork - Sequence -
Pardo - WPCRK033; Cobre - WPCRK040



Installation Photo
Featuring Composition Cork –
Bark – Pulp – WPCRK006



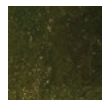
Installation Photo

Featuring Composition Cork –
Sheets – Guépard – WPCRK028



Installation Photo

Featuring Composition Cork - Motion
Branco - WPCRK082; Amarelo - WPCRK077



Installation Photo
Featuring Composition Cork –
Tiles – Viridis – WPCRK022

DISCOVER THE ASI ADVANTAGE[®]



Offering a comprehensive range of award-winning innovative and distinctive interior finishes



24/7 access to products that transcend trends on **archsystems.com**



Explore the Power of Materials[®] in the ASI Showroom featuring the Next New Thing[®] from every collection and full-scale, real world installations



Let's customize and develop! Send an image that you love, and an ASI material expert will work with you to meet your design intent and budget criteria



Project Management Material
take offs / On-site support



Passionate about realizing
your design vision since 1990



National Account
program pricing



Value engineering and
solution based products

Committed to Green



Sustainable Products
Offered

ASI | Architectural Systems was a pioneer in offering sustainable products, and we remain dedicated to sourcing well-designed, eco-friendly materials. Look for the green globe icon!



Contact:
ASI | Architectural Systems, Inc.
archsystems.com

sales@archsystems.com | T: 212.206.1730



FOLLOW. TAG. SHARE.