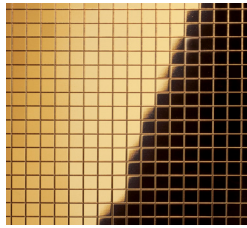


# The Venue - Marquee

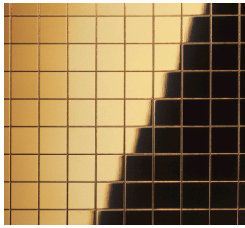


Reflective metals in Gloss and/or Matte finishes, with seven new Mosaic patterns that can be applied to curved surfaces, ensure **Marquee** will deliver a dynamic visual language to create excitement in any space. These High Impact Polystyrene panels are 100% PVC-free with a choice of either a dry back or self-adhesive backer and will absolutely transform an area dazzlingly.

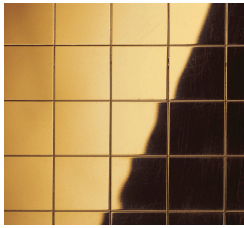
## Gloss



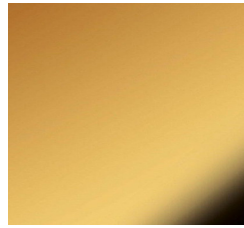
Self-Adhesive only:  
DSBUS205



Self-Adhesive only:  
DSBUS206



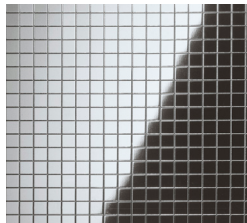
Self-Adhesive only:  
DSBUS207



Dry Back only:  
DSBUA063



Dry Back: DSBUS348  
Self-Adhesive: DSBUS349



Self-Adhesive only:  
DSBUS201



Self-Adhesive only:  
DSBUS202



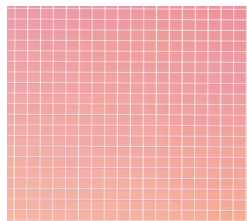
Self-Adhesive only:  
DSBUS203



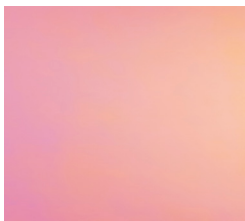
Dry Back: DSBUS965  
Self-Adhesive: DSBUS966



Dry Back: DSBUS350  
Self-Adhesive: DSBUS351

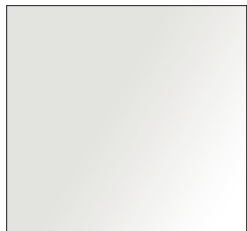


Self-Adhesive only:  
DSBUS714



Dry Back: DSBUS705  
Self-Adhesive: DSBUS706

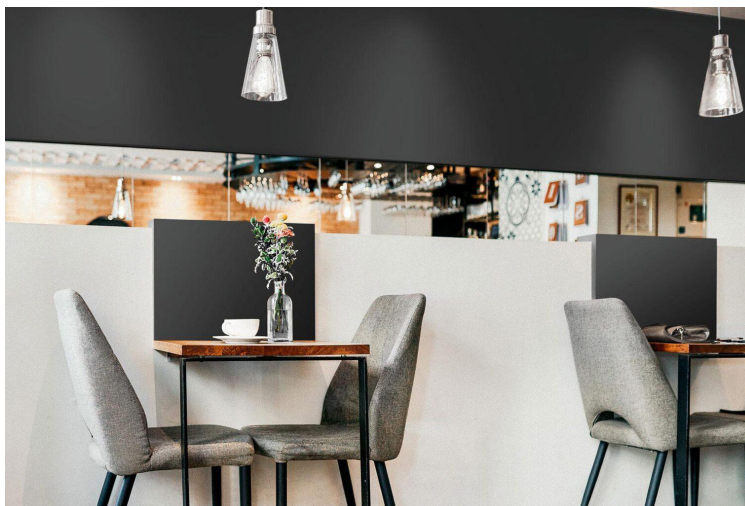
## Matte



Dry Back: DSBUA005  
Self-Adhesive: DSBUA006



Dry Back: DSBUA061  
Self-Adhesive: DSBUA062



### Installation Photo

Featuring The Venue - Marquee  
Matte - DSBUA061

View collection web page for the complete offering including additional product options, corresponding Spec ID# and updates.

### SPECIFICATIONS

*Minimums Apply*

**SIZE:** 102.4" x 39.37" (2600mm x 1000mm) nominal standard; **Mosaics:** 38.58" x 38.58" (980mm x 980mm) nominal

**BACKING:** Dry Back or Self-Adhesive (as noted above); **Mosaics:** Self-Adhesive only

**FINISH:** Gloss or Matte (as noted above)

**THICKNESS:** DSBUS348 - DSBUS351: Dry Back: 1.0mm (.039") / 2.0mm (.079"); Self-Adhesive: 1.13mm (.044") / 2.13mm (.084");

DSBUA005, DSBUA006, DSBUA061, DSBUA062, DSBUS705, DSBUS706, DSBUS965, DSBUS966: Dry Back: 1.0mm (0.039");

Self-Adhesive: 1.13mm (.044"); DSBUA063: Dry Back: 1.0mm (0.039"); **Mosaics:** Self-Adhesive: 1.2mm (.047")

**CONSTRUCTION:** High Impact Polystyrene (HIPS)

**APPLICATIONS:** Walls, Furniture, Display Elements

- Abrasion Resistant

- **100% PVC-free**

- Please note that variations in color and texture may occur due to the nature of the material

# INSTALLATION METHOD

## APPLICATIONS

- The Venue - Marquee can be used anywhere you would use plastic laminates, vinyl wall coverings, wallpaper or wood surfacing panels
- Specific applications would be:
  - o Vertical wall treatments
  - o Elevator interiors
  - o Furniture i.e. headboards
  - o Store fixtures
  - o Shelves
  - o Doors
  - o Ceiling tiles
  - o Cabinet faces and doors

## IMPORTANT!

- Direct contact with water is to be avoided!

## INSTALLATION

Material can be installed by a qualified wall covering contractor or carpenter when being applied to Millwork

Material that is shipped rolled should be laid flat for 24 hours prior to installation

### **Acclimatization**

- Material should be acclimatized in the space for 24 hours prior to installation
- Ideal working temperature in the space for installation should be between 50°F and 86°F

In a temperature-controlled environment, the The Venue - Marquee is a dimensionally stable product. However, a temperature fluctuation of 50°F will cause expansion/contraction of approximately 1/32" over a length of 39".

### **What does this mean?**

This means that The Venue - Marquee should be installed only when the buildings environmental systems are operating. Or they are going into a space where temperature fluctuation is not an issue.

If the temperature fluctuates over that range (50°F) you will see either gapping or buckling at the seams where the material butts. To compensate in installations where this may occur, the vertical surface behind the material can be painted to match the base color of the The Venue - Marquee and a 2mm gap can be left between panels.

As an example of the type of installation that can be problematic are lobbies with high atriums and sky lights. Cooled air will sink while the upper levels of the atrium can be very hot.

### **The Venue - Marquee can be ordered, prepared for installation with:**

- Self-adhesive pressure sensitive back, unbacked, or prepared for PVA glue\*.

### **Adhesives:**

- Water based contact adhesives are an acceptable means to apply the The Venue - Marquee to a substrate.
- All adhesives should be tested for compatibility prior to application.

\*Sheets that are to be used with PVA adhesives go through an additional manufacturing process and must be processed within 6 months of the manufacturing date. The sheets are delivered with a label on the back that notes that they have been prepared for PVA adhesive and the date of manufacture.

The advantage of using a press with PVA glue will be no expansion and contraction of the material. This will allow the builder to attain a flush edge application of the material. This is especially important if an edge trim is going to be applied.

Typically, you would see this type of application on doors, drawer fronts, cabinetry and furniture as well as store fixtures and displays.

### **Processing:**

Apply adhesive all over to the whole prepared and cleaned surface using a fine trowel with A1 teeth or a medium trowel with A2 teeth, depending on relief of the pattern, and press on firmly. At processing temperatures of 65°F - 86°F, the adhesive should then be left to air dry for approx. 15 minutes. Finger test: After application with the trowel, the minimum drying time is reached when the adhesive no longer sticks to the fingers.

- The bond is resistant to humidity; contact with water should be avoided.
- Clean tools immediately after use with water.
- Protect unused adhesive from frost.
- Use in a well-ventilated area

### **The Venue - Marquee can be installed on both porous and non-porous surfaces**

Porous surfaces can include:

- Chip board
- MDF
- Gypsum
- Sheetrock
- Masonry

When The Venue - Marquee is being applied to a porous substrate the substrate should be sealed prior to installation with a water-based contact adhesive.

Non-porous surface includes:

- lacquered surfaces
- plastic laminate
- melamine
- vinyl

### Surface/application

- Must be dry, smooth, free of loose material, dust and dirt, grease, wax and silicon.
- In order to achieve maximum adhesion, non-absorbent surfaces should be cleaned with alcohol (ethanol, isopropyl alcohol).
- Adhesive sheets are suitable for both absorbent and non-absorbent surfaces, although nonabsorbent surfaces are recommended.
- In the case of porous or highly absorbent surfaces, e.g. brickwork, we recommend our dispersion adhesive as a suitable first coat.
- Where the surface is concave or convex, all sheet edges must be anchored mechanically using profiles.

### Cutting, drilling, punching, sawing

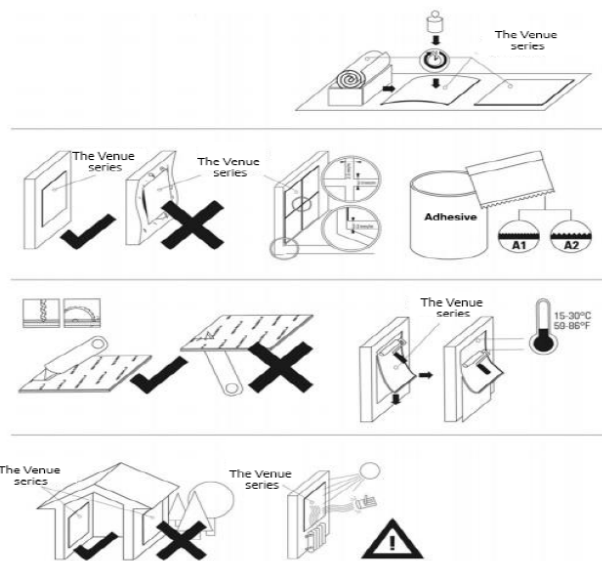
- Cutting must always take place starting from the upper/patterned surface.

### Bonding

- **Patterned sheets delivered in rolled form must be kept flat for a minimum of 24 hours. Weighing down improves evenness.**
- The ideal working temperature is between 50°F to 86°F.
- The patterned sheets must be acclimatized, i.e. they must be brought up to room temperature prior to processing (avoidance of condensation on the adhesive surface).
- A temperature increase of 50°F will cause our products to expand by approximately 1/32" over a length of 39" (0.7 mm over a length of 1 m).
- Expansion and contraction of the material should be taken into consideration when temperature and humidity are not maintained at a constant level.
- **As a rule, an approximate 2-3mm expansion joint is to be left along the sheet edges!**
- In the case of high ambient temperatures or major temperature fluctuations, the expansion gap should be increased.
- Air bubbles must be avoided; use a medium-hard rubber roller with a width of approx. 170 mm.
- Gradually remove the adhesive backing cover and press as firmly as possible onto the underlying surface. Do not touch the adhesive surface.
- **WARNING:** Do not employ adhesives containing solvents as these can dissolve our backing material!

### Surface protection

- The upper sheet surface is safeguarded against damage by a protective film, which is removed after processing.



## MAINTENANCE

### In the case of light dirt:

- Use a soft cleaning cloth, which is dust and dirt-free.

### In the case of heavy dirt:

- Use a standard plastic or glass cleaning agent.
- Do not spray the cleaner directly onto the material surface, but sparingly onto a soft cloth!
- Do not employ abrasives, cleaning agents containing solvents, or pure alcohol.
- Clean leather surfaces using standard liquid soap and then remove it with a damp cloth.

## WARRANTY

Architectural Systems issues a warranty of 2 years from invoice date to this product if the following requirements are fulfilled:

- compliance with the application instructions
- indoor application
- no direct contact with water

Direct sun light can slightly change the color of dark surfaces after some time. Sunlight does not harm the glossy respectively metallic effect at interior applications. Mechanical load such as scratches, pressure marks, etc. are excluded.

Please note that variations in color and texture may occur due to the nature of the material.

## TECHNICAL DATA

Please contact [sales@archsystems.com](mailto:sales@archsystems.com).