

Terassa Porcelain

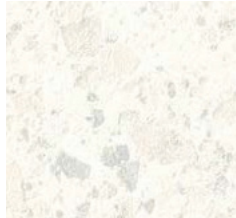


Reminiscent of Art Deco and Moderne styling from the 1920s-1940s, **Terassa Porcelain** offers thirteen robust and colorful tiles for walls and floors in a range of sizes, including large format and aggregate chips embedded in a matrix. Embracing yet evolving from the past this contemporary full body porcelain captures the spirit of old Venetian terrazzo masters for a myriad of design possibilities with an artistic edge, suitable for the most exacting environments.

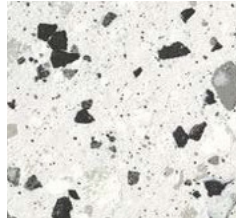
Tiles - Spec ID#'s listed are for 24" x 24"



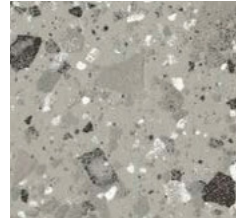
Crushed White
Honed: FLSRB360
Polished: FLSRB341
Textured: FLSRB383



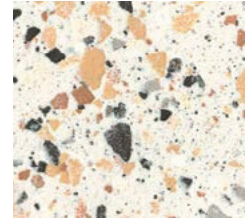
Ice
Honed: FLSRB359
Polished: FLSRB340
Textured: FLSRB382



Silver Coat
Honed: FLSRB361
Polished: FLSRB342
Textured: FLSRB384



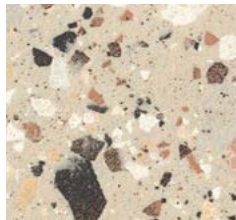
Retro Grey
Honed: FLSRB362
Polished: FLSRB343
Textured: FLSRB385



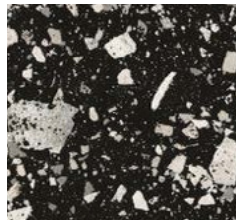
Apricot
Honed: FLSRB364
Polished: FLSRB345
Textured: FLSRB387



Cocoa
Honed: FLSRB366
Polished: FLSRB347
Textured: FLSRB389



Agave
Honed: FLSRB365
Polished: FLSRB346
Textured: FLSRB388



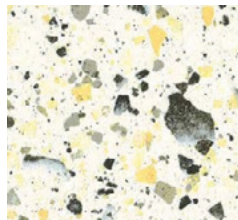
Night Sky
Honed: FLSRB363
Polished: FLSRB344
Textured: FLSRB386



Pastel Pink
Honed: FLSRB424
Polished: FLSRB409



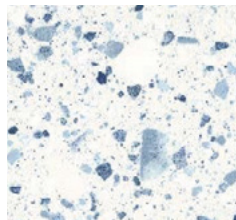
Terracotta
Honed: FLSRB421
Polished: FLSRB406



Citrus
Honed: FLSRB422
Polished: FLSRB407



Olive
Honed: FLSRB420
Polished: FLSRB405



Sea Blue
Honed: FLSRB423
Polished: FLSRB408

View collection web page for the complete offering including additional product options, corresponding Spec ID# and updates.

SPECIFICATIONS

Minimums Apply

SIZE: 48" x 24", 24" x 24", 12" x 24", 8" x 8"

THICKNESS: 10mm

FINISH: Honed, Polished, Textured

APPLICATION: Floors and Wall; Interior and Exterior

HEALTH AND WELLNESS: Proprietary antimicrobial and anti-pollution coating is available with a 5000 sq.ft. minimum

Non Porous - able to clean with industrial grade products

- Trim Pieces Available
- GREENGUARD Gold Certification
- Can contribute to LEED®
- In Stock products are subject to availability
- Please note that variations in color and texture may occur due to the nature of the material

INSTALLATION METHOD

Laying

How a floor is laid is of great importance. A well-laid floor enhances all of the aesthetic qualities of the material used.

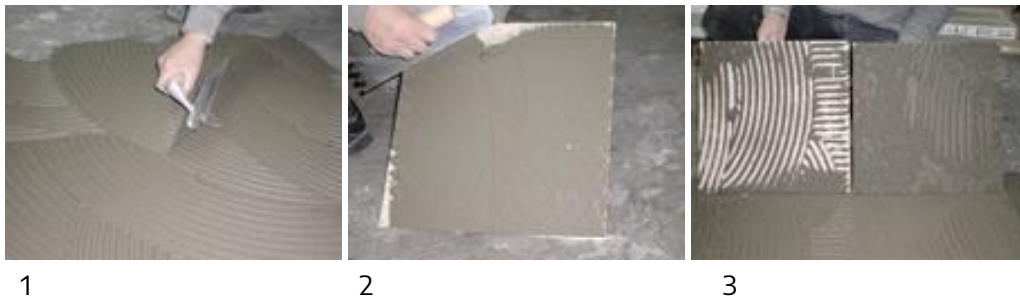
Check that the bed (concrete slab) is perfectly level and completely dry and smooth

Use a cleaning device, such as a vacuum, to carefully remove dust and residues.

After having chosen a suitable thin-set mortar and having prepared it to follow the manufacturer's instructions, spread the thin-set mortar with a smooth spatula and then comb it with the tooth part **(1)**.

ASI strongly suggests the use of polymer-modified thin-set mortar. Polymer-modified thin-set mortar will increase the lifetime of your installation.

For heavy traffic floors, a double layer of thin-set mortar is recommended **(2)**. Thus, wetting the back of the product itself with thin-set mortar **(2)**. This procedure prevents the possible creation of holes that could cause breakage (see the difference between spreading and double spreading) **(3)**. After approximately 24-48 hours, it is safe to proceed to grout. The laid floor must be cleaned carefully and then grouted all over its surface using a rubber spatula. It is advisable to use colors similar to the floor, in order to obtain a harmonious end result.



How to cut

It is necessary to use suitable, professional tools, always checking their cutting capacity and replacing worn parts when necessary. For accurate cutting use a traditional cutter, checking the state of the cutting wheel before starting.

For circular cutting, after having made a template (that is to say a pattern of the part to be cut), lay it on the part in question and transfer the shape with a pencil. Using a diamond-cutting disk, cut without exerting excessive pressure **(4-5)**.



INSTALLATION METHOD CONT.

How to make holes:

It is necessary to use a water milling cutter or a continuous crown diamond-cutting disk for stoneware and granite tiles. After having penciled (6) – on the back of the product – the perimeter of a square within which the hole must be made, use the cutting tool to cut perpendicular and diagonal lines and then concentric circles towards the outside (7). The pictures at the side illustrate in detail the cuts to follow. When the central thickness of the hole has become very thin, turn the piece over and open up the hole by tapping lightly (8). For holes in tiles a diamond point's drill for granite must be used. It is important to remember to cool the points often while working.



6

7

8

MAINTENANCE

Quality

Terassa Porcelain is produced using the highest quality standards and the finest available raw materials. Glazed and unglazed porcelain products marketed under the manufacture trademarks are fully vitrified, resulting in extreme durability, hardness, and low water absorption. Terassa Porcelain is highly stain and wear resistant. However, as with every surface material, a basic cleaning and maintenance program should be followed to maintain a satisfactory appearance and an acceptable level of performance.

Care During Construction

Terassa Porcelain is classified as a finish material. As such they should not be installed until after any heavy construction work has been completed. In instances where the Terassa Porcelain is installed prior to the completion of construction special care must be taken to protect the tile until it is put into normal service. The general buildup of dirt and debris present on any construction site may negatively affect the performance of the tile if it is left unprotected. The best way to protect the tile surface is to cover it with a protective layer of Kraft paper, carpeting, cardboard, plywood, or any other material that will not adversely affect the tile surface.

Initial Cleaning and Maintenance

The most important cleaning operation is performed immediately after the tile has been set. This involves the complete removal of grout residue and construction dirt from the newly installed Terassa Porcelain. Grout manufacturers provide directions for the cleanup of their products after installation has been completed. These directions should be followed. In many cases Terassa Porcelain can be successfully cleaned by scrubbing with a mild detergent, combined with a thorough rinsing. It is critical that all rinse water be removed through wet vacuuming or dry toweling. Should any grout residue remain, this process can be repeated several times as necessary.

MAINTENANCE CONT.

For highly textured products, or when using a dark colored grout with a light-colored tile, a grout release may be used prior to grouting to assist in the removal of the grout from the surface of the tile. Before grouting, the contractor should test a small area of the tile to determine if the chosen color grout will discolor the surface of the tile, in which case a grout release should be utilized. Please follow the specific manufacturer's instructions for the use of any grout release product.

Surface Coatings

The inherent density and low water absorption of all Crystalline Wall Tiles ensure a product that is easy to maintain. Crystalline Wall Tiles do not require the use of sealers or waxes. These surface coatings may negatively affect the performance of the tile.

In some instances where an unglazed, polished porcelain product is used in an area subject to excessive exposure to dirt, a penetrating type sealer may be used. A penetrating sealer is designed to fill the microscopic pores created during the polishing process. It is not designed to coat the surface of the tile.

We recommend that all sealers be tested in a small inconspicuous area before general use on the floor. Please ensure you follow the manufacturer's instructions when using a penetrating sealer and do not allow the sealer to dry on the surface of the tile.

Regular Maintenance

The inherent technical characteristics of Crystalline Wall Tiles ensures that they will be relatively easy to maintain and should provide years of enjoyment. Many general-purpose cleaners that are readily available are acceptable for use on Crystalline Wall Tiles. It is important that the cleaner has a non-oil, non-animal fat, non-soap base. These components can leave behind an invisible residue with can trap dirt. It is also important that the tile receive a thorough rinsing with clean water after the cleaning process has been completed.

The general cleaning steps for Crystalline Wall Tiles can be summarized as follows:

1. Remove all loose debris from the tile by sweeping with a soft bristle broom or vacuuming.
2. Any spills should be wiped up as quickly as possible.
3. Apply the recommended amount and dilution of the appropriate cleaner to the tile. Allow the cleaner to remain on the tile for short period of time (at least 5 minutes).
4. For unpolished tile, scrub with a nylon pad or soft bristle brush. For more heavily soiled floors a floor machine equipped with a nylon pad or bristle brush may be used. For polished tile, wipe or mop with a nonabrasive mop or cloth.
5. Remove the dirty cleaning solution and water with a wet vacuum or mop. Thoroughly rinse the tile with clean water and remove with a wet vacuum, mop, or towel. It is essential
6. for all detergent residues to be completely removed from the tile. Any remaining detergent residue can dry on the tile and form a coating which can trap dirt and be very difficult to remove. The tile should be rinsed several times if necessary, to remove all detergent residue.

The frequency and timing of any maintenance program is dependent on the specific characteristics of each tile application. Factors such as foot traffic, environmental conditions and product color should be considered when planning your maintenance schedule. In high traffic areas, or in areas subject to excessive exposure to dirt, a more frequent cleaning schedule may be necessary.

MAINTENANCE CONT.

A Word About Cleaners

There are many excellent cleaners on the market today which should provide you with satisfactory results. All-purpose household cleaners such as Soft Scrub, Top Job, Mr. Clean, Ajax Liquid, Dow Bathroom Cleaner, Liquid Comet, and Fantastik are all suitable for general purpose cleaning of Aegean products. Soap less detergents such as Spic & Span and 409 may also be used. For the removal of stains on unpolished tile, scouring powders such as Comet, Bon Ami, or Ajax may be used. These may be used in conjunction with a nylon pad or soft bristle brush. Steel wool is not recommended.

For heavier cleaning requirements or commercial applications, products manufactured by Aqua Mix, Hillyard Industries, Walter G. Legge Co., or CeramaSeal may be used. These products are available through your local ceramic tile dealer. In all cases please ensure you follow the manufacturer's instructions. We also strongly recommend that all cleaners be tested first in a small, inconspicuous area before general use on the floor.












WARRANTY

1 year limited Commercial and or Residential warranty

- ASI warranty that its products meet or exceed the performance specification outlined in ANSI A137. Our porcelain is first quality product that is provided through the production facility.
- Approved use for Commercial and residential projects and installations
- Our products should be examined prior to installation
- Missuses of the product by the purchaser including; negligence, physical or chemical abuse is not covered thy this warranty
- Installation defects are not covered by this warranty
- Visual defect or non-conformities apparent prior to installation are not covered thy this warranty
- This warranty will cover our products purchased by a residential or commercial user for up to 12 months from the date material is shipped
- Certain factors on a jobsite are beyond our control; installation, structural design & environmental conditions
- In the event of latent defects caused by improper manufacture, defined as tiles not conforming to industry standards, ASI will either refund the price for the defective pieces or provide replacement material of the same kind. ASI will not be responsible for any costs of labor, installation and/or removal of our products.
- ASI does not warrant that our glazed and unglazed porcelain will not scratch, chip or show signs of wear.

ASI makes no implied warranties of merchantability or fitness for a particular purpose or any other warranties expressed, or implied warranties implied, except as otherwise set forth above. Under no circumstances shall ASI be liable for incidental or consequential losses, damages, or expenses, directly or indirectly arising from the sale, handling or use of our products. No consequential (including loss of profits) or incidental damages are recoverable.

TECHNICAL DATA

PHYSICAL-CHEMICAL PROPERTIES	STANDARD OF TEST	REQUIRED VALUE	AVERAGE VALUE	
 Sizes .	ISO 10545.2	Length and width	± 0,6% max	± 0,2%
		Thickness	± 5% max	± 5%
		Linearity	± 0,5% max	± 0,2%
		Wedging	± 0,6% max	± 0,2%
		Warpage	± 0,5% max	± 0,2%
 Water absorption .	ISO 10545.3	≤ 0,5%	≤ 0,06% *	
 Flexion resistance .	ISO 10545.4	Breaking modulus	≥ 1300 N	50 N/mm ² (561 kg/cm ²)
		Breaking strength	≥ 700 N	2500 N ≥ 700 N
 Deep abrasion resistance .	ISO 10545.6	Volume ≤ 175 mm ³	142 mm ³ (as tested by Smith Emery laboratory)	
 Coefficient of linear thermal-expansion .	ISO 10545.8	≤ 9x10 ⁻⁶ °C ⁻¹	6,5x10 ⁻⁶ °C ⁻¹	
 Frost resistance	ISO 10545.12	Must not produce noticeable alteration to surface	Frost-proof	
 Chemical resistance	ISO 10545.13	UB Minimum	Compliant	
 Stain resistance	ISO 10545.14	1 < X < 5	CLASSE 5 - CLASS 5 ** Stains removed by hot running water (without detergent)	
 Color resistance to light	DIN 51094	Must not produce noticeable colour variation	No change in brightness or colour of samples	
 Friction coefficient	DIN 51130	Test method available	It can vary according to the surface finish	
 Friction coefficient	BCRA REP CEC 6/81	Satisfactory friction 0,40 ≤ μ ≤ 0,74	Compliant	