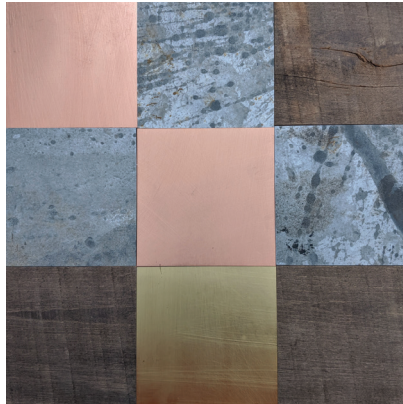


Metal Fusión Panels



A capsule collection of **Metal Fusión Panels** has just dropped! Six modular repeating and continuous layering of oxidized metals which include Brass, Copper Zinc (plus one pattern mixed with wood) on an MDF core, unleash a flow of creative design choices for feature walls and architectural millwork components in all market segments!



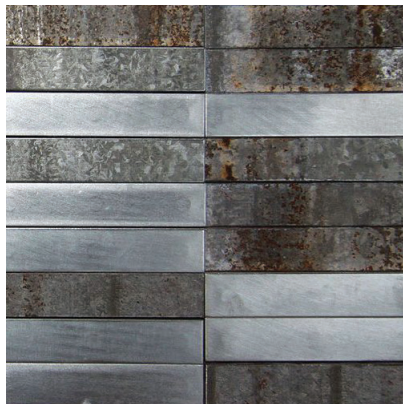
WPFSN172
Mixed Oxidized Metals with Wood



WPFSN215
Oxidized Brass



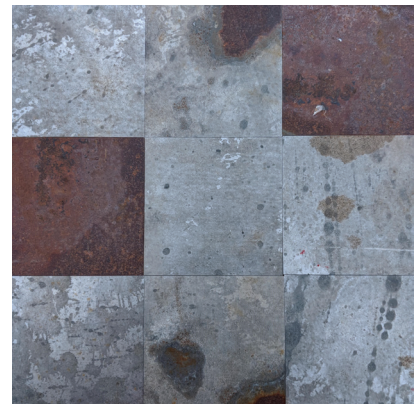
WPFSN216
Oxidized Copper



WPFSN052
Steel



WPFSN217
Oxidized Brass



WPFSN218
Oxidized Zinc

View collection web page for the complete offering including additional product options, corresponding Spec ID# and updates.

SPECIFICATIONS

SIZE: 47 1/4" x 94 1/2" nominal; **WPFSN052:** 53 1/8" x 98"; Custom sizes available

THICKNESS: **WPFSN172** and **WPFSN218:** 22.23mm (7/8"); **WPFSN216:** 19.05mm - 25.4mm (3/4" - 1");

WPFSN052 and **WPFSN217:** 15.88mm - 25.4mm (5/8" - 1"); **WPFSN215:** 15.88mm - 22.23mm (5/8" - 7/8") including backing

CONSTRUCTION: 1/2" MDF core

METAL VENEERS: Brass, Copper, Zinc

FINISH: Oxidized real metal; **WPFSN052:** Metal varnish

APPLICATION: Wall, Architectural Millwork, or Furniture and Fixture Components

INSTALLATION: Z-Clip

HEALTH AND WELLNESS: The inherent properties in metal provide a naturally bacterial resistance

- Contact sales@archsystems.com for all custom options
- Please note that variations in color and texture may occur due to the nature of the material

INSTALLATION METHOD

The preferred method of installation is with Z-clips.

Blind fastening methods are the preferred means of installation due to the fact that it allows for prefinished panels to be delivered and installed without damage to the face.

Z-clips generally allow for closer spacing to the wall, approximately 3/16" between the wall surface and the back of a panel. When applying a Z-clip to the back of a panel the relief of the pattern, position and length of the screws used must be taken into consideration in order not to damage the face of the panel.

Wall mounted clips should be secured into the aluminum or wood studs within the wall structure and not fastened only through the drywall or sheetrock unless noted by Architect.

A minimum of 4 attachments points is required over a 96" height. **(1) 6" from top (1) 6" from bottom then equal spacing for remaining (2) clips.**

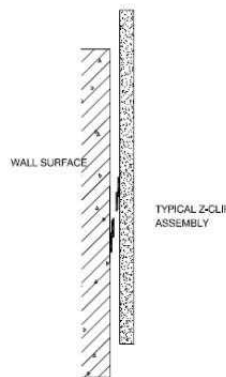
Clearance must be considered between the top of the panel and the ceiling to allow the panel to be lifted and dropped onto the cleat or Z-clip (1 1/2").

Never use an adhesive to fix the two parts of the cleat together. MDF is a wood product and will expand and contract due to changes in temperature and humidity. Taking this into account the panels should be allowed to "float" on the clips.

Wood and veneered products are warranted for performance within a range of environmental conditions as specified by the Architectural Woodwork Institute (AWI), and in accordance with approved industry standards for installation. geographic region and must be considered while engineering the installation.

When applying a Z-clip to the back of a panel the relief of the pattern, position and length of the screws used must be taken into consideration in order not to damage the face of the panel.

The same consideration for the panel about, the relief of the pattern, position and length of the screws used, must be taken into consideration in order not to damage the face of the panel. It is the responsibility of the contractor to engineer the installation for its specific application. The following illustrations demonstrate several types of hanging methods.



MAINTENANCE

Tiles must be regularly cleaned and maintained to extend their life and beauty. Most dirt stains can be cleaned with a mild detergent and soft cloth or sponge. Fingerprints, streaks and watermarks can be removed with olive oil. When using stainless steel cleaner, avoid direct contact with grout as it may discolor.

DO NOT use abrasive cleaners, powders, scouring pads, steel wool or sandpaper.
DO NOT let soap, bleach or other cleaning solutions set on the surface.

For removing light scratches, we recommend a metal polisher applied with a steel wool rag. Gently rub in a circular motion first, then wipe clean with a damp cloth.

WARRANTY

Material is to be free from defect upon delivery.
Please note that variations in color and texture may occur due to the nature of the material.

TECHNICAL DATA

Please contact sales@archsystems.com.