

# Engineered Cork Floating Floor



A contemporary classic is updated in the sustainably inspired **Engineered Cork Floating Floor** collection. With a sophisticated warm color palette combined with Floating Floor technology and a superior HDF Core these patterns will enhance every project without compromising on the aesthetic. Comfort, sound absorption plus being a rapidly renewable material make this an ideal biophilic design choice.



FLQHW083



FLQHW085



FLQHW139



FLQHW140



FLQHW141



FLQHW142



FLQHW143



FLQHW144



## Opening Ceremony Ace Hotel, New York, NY

Leong Leong  
Featuring Engineered Cork Floating Floor -  
FLQHW085, FLQHW143

View collection web page for the complete offering including additional product options, corresponding Spec ID# and updates.

### SPECIFICATIONS

**SIZE:** 5 1/2" x 48"

**THICKNESS:** 13/32"

**CONSTRUCTION:** HDF Core, Natural Cork Top and Bottom Plys, Micro-beveled Edge

**SPECIES:** Cork

**FINISH:** Smooth, Ceramic Enhanced Acrylic

**INSTALLATION:** Floating, Glue-Down

- GREENGUARD Gold Certified
- CARB Compliant
- Can contribute to LEED®
- In Stock products are subject to availability
- Please note that variations in color and texture may occur due to the nature of the material

# INSTALLATION METHOD

**Please read these instructions thoroughly in conjunction with relevant country standards before installation.**

## TRANSPORT, STORAGE, ACCLIMATION

- Transport and store cartons in laying/flat position.
- Store planks at room temperature for at least 48h in their packaging, prior installation.
- Remove plastic wrapping from packaging only when ready to install.
- Room temperature must be at least 18°C (65°F) before & during installation.

## SUBFLOOR REQUIREMENTS

### GENERAL

Floating floors can be laid on top of most hard surfaces (e.g. concrete, ceramics, wood).

- Soft subfloors (e.g. carpets) must be removed.
- The subfloor must be even, flat, dry and variations should not exceed 3/16" in 8 feet radius.
- All type of hard subfloors must be dry (concrete screeds < 2.0 %; anhydrite screeds < 0.5 % - CM instrument).

### MOISTURE PROTECTION

Required on concrete/below grade only.

- Use PE film/moisture barrier with minimum thickness of 0.2 mm (.008)

### RADIANT-HEATED SUBFLOORS

- Subfloor surface temperature must not exceed 28°C (82°F).
- For detailed information, follow instructions of the subfloor heating system manufacturer/contractor or contact your supplier.

### PREVENTIVE CARE

- If works will take place in the room where the floor is installed, protect with craft paper, plywood or hardboard.
- Do not drag furniture across the floor.
- Use felt pads on chair and furniture legs.
- Office roller chairs must comply with EN12529 (Type W). Use protective office mats under the rolling chairs.
- Place quality walk-off mats at all entrances to retain tracked in dirt, grit and moisture.
- Never use latex or rubber backed mats as they can permanently stain the floor.
- Avoid moisture on the floor. Clean up spills immediately.
- Ideal and healthy room conditions are 35-55% R.H. at 20°C (68°F).
- If necessary use a room humidifier.
- These floors are intended for indoor use only.
- Flooring products are based on natural materials and will expand and contract through heating and non-heating seasons, thus experiencing some separation between the planks/tiles at different times during the year. Such separations are not considered a product defect.

## INSPECTION

- Prior to installation, inspect planks in daylight for visible faults/damage.
- Check if subfloor/site conditions comply with the specifications described in these instructions.
- If you are not satisfied do not install and contact your supplier.

## TOOLS AND MATERIALS REQUIRED

- Electric saw • Spacers • Pencil • Set square
- PE film/Moisture Barrier • Adhesive tape

## MOISTURE PROTECTION

Required on concrete/below grade only.

- Lay the PE film, allowing for at least 20 cm (8") overlapping and tape. • Turn the film upward 5 cm (2") along the walls.
- Trim after the Trims / Moldings are fixed.

## BEFORE LAYING

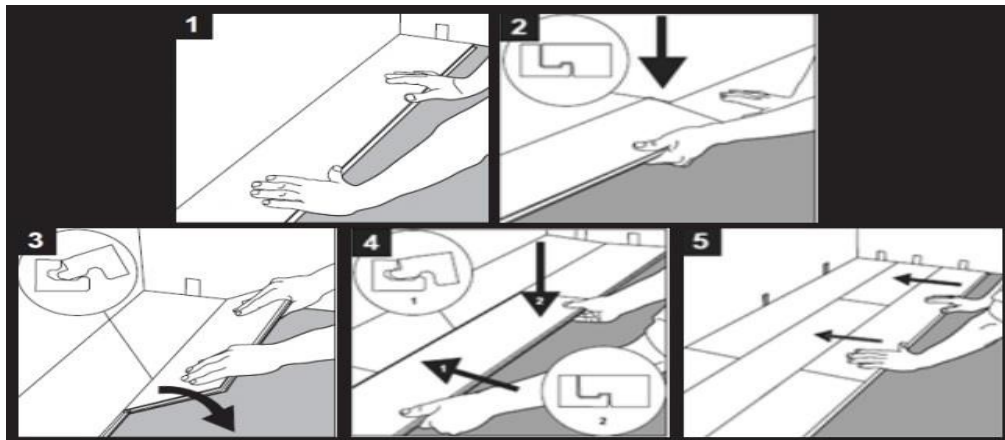
- Measure the room at right angle to the direction of the planks.
- Planks in the final row should be at least 5 cm wide.
- For this purpose, planks in the first row can be cut to smaller size.
- Shuffle planks in order to obtain a pleasant blend of shades.
- Lay planks preferably following the direction of the main source of light.
- When installing on wood subfloors, flooring planks should run perpendicular to the direction of the subfloor joists.
- Planks must not be nailed or screwed to the subfloor.
- Trims / Moldings must not be fixed in a way which restricts the movement of the floor.

## EXPANSION GAPS

- Provide 10 mm (3/8") expansion gaps to the walls and other fixed objects.
- Areas greater than 100 m<sup>2</sup> (900 sq. ft) or 10 m (30 feet) in either direction, transitions between rooms and asymmetrical areas require extra expansion gaps.

## START LAYING

- 1 Start in the corner, turn the tongue side of the plank to the wall while maintaining a gap of 10 mm (2/5") on the short side.
- 2 Hold the next plank tight to the short end of the first one matching the corner, then fold it down with a single action movement. Make sure that the long sides of the planks make a straight line. Complete first row in the same way. Cut final plank of the first row to correct length and start next row with the piece leftover (must be at least 300 mm (12") long). Ensure that end joints are staggered at least 300 mm (12").
- 3 Place first plank of the new row with the tongue side at an angle against the groove side of the plank in the previous row. Press forward and lay it flat at the same time.
- 4 Place the second plank like the previous one and fold it down ensuring that no joint is noticed between short sides. Ensure that the plank is positioned on the integral locking strip of the plank in the previous row.
- 5 Adjust the distance to the wall to 10mm (2/5") when three rows are completed. Proceed installation as described above until reaching the opposite wall.



# MAINTENANCE

## CLEANING

- Your new Luxury Vinyl Cork floor contains a 21 mil protective wear layer and does not require any additional sealer or protective finish.
- Regularly vacuum or sweep with a soft broom or micro-fiber mop to collect dust, dirt, debris that can dull the finish or scratch the floor. DO NOT USE A VACUUM WITH A BEATER BAR HEAD,.... should be a soft brush, felt type, or hardwood floor type attachment and be sure the vacuum's wheels are clean and do not damage the floor's surface.
- Periodically use an approved no-wax floor cleaner to clean the floor. Vacuum first, apply cleaner directly to a clean cloth or micro-fiber mop as instructed, then go over the floor thoroughly to clean. Call tech services at 1-800-258-5758 for information on recommended cleaners.
- Abrasive scrubbing machinery and/or power scrubbers & buffers of any type are not recommended to clean the floor in residential installations. Steam cleaning, as it involves heat and moisture, also is not recommended. SPECIAL NOTE: In commercial installations, floor scrubbers may be used for regular floor maintenance providing equipment is well maintained, in proper working condition, and operator is fully trained in the operation and care of the equipment.
- LVC planks will not expand when exposed to water thus occasional damp mopping is acceptable, however, it is a still a good idea to remove spills as promptly as possible with a soft, absorbent cloth and recommended cleaning products.
- Don't use liquid or paste wax, oil soaps, or any other strong cleaners that contain silicon, citrus oils, lemon oil, tung oil, acrylics, acidic materials (such as vinegar) or ammonia. Detergents, bleach, and abrasive cleaners are not recommended. Avoid "home remedies" found on the internet and other sources. These products and techniques can cause your floor to become slippery, or cloud and dull the finish. Use of these and similar products can harm the performance of your floor and its recoat ability. Also avoid "gloss restorers" or "mop & shine" products as they can contain acrylics or urethane which if not applied properly may not adhere adequately or may "build up" on the floor and thus void the original finish warranty.

### FLOOR PROTECTION TIPS

- Maintain a constant, climate controlled environment (35%-55% Relative Humidity, and between 60 and 80 F). Your HVAC system should remain active at all times, and the use of a humidifier/dehumidifier to maintain humidity levels if necessary is recommended to minimize seasonal expansion and contraction.
- Place felt-type protectors on the bottom of all chair legs, furniture and fixture legs to help minimize scratching. For heavier objects, use protective cup/pads. Generally the heavier the object, the wider the floor protector is needed.
- Shoes with high heels, sports cleats, etc. will likely dent, gouge, or scratch cork floors which is not covered by our warranty. Regularly check the bottom of all shoes for debris and sharp objects that could damage floor surfaces.
- Use throw rugs inside and outside of entries and on high-traffic areas to prevent dirt and grit from being tracked in and scratching you floor's finish. Interior rugs and slip resistant underlayments must be made of a breathable, non-marking, material to avoid trapping moisture that can discolor/damage your floor. Avoid rubber or latex backed mats (except where noted) as they can stain your floor.
- Keep pet's nails trimmed and clean of dirt and debris to minimize surface scratches.
- Avoid sliding or rolling heavy furniture, appliances, or other heavy objects directly across your cork floor. Whenever possible, lift the item to be moved. If it must be rolled or "walked" across the floor, avoid narrow wheeled and metal and/or hard surface rollers and protect the floor with plywood or other hard sheeting to prevent damage.
- SPECIAL NOTE: FOR OUR LUXURY VINYL CORK FLOORS, WE RECOMMEND FULL SPREAD PERMANENT ADHESIVE DIRECT-TO-SUBFLOOR INSTALLATION IN ROOMS WITH HEAVY DIRECT SUNLIGHT. Use protective window coverings, sun-screens, etc. to block fade-causing UV rays and the excessive heat from direct sunlight, and rearrange rugs and furniture periodically to help your floors age more evenly. Sunlight's UV rays and artificial light accelerates the oxidation and aging of your floor, and can cause the floor to fade or change color. Our warranty does not cover damage from the sun, UV rays, or artificial light.

## WARRANTY

- Architectural Systems warrants the finish on approved Commercial Products for a period of five (5) years from date of purchase providing proper installation, care and maintenance is provided as defined by the Architectural Systems Commercial Maintenance Program and Installation Instructions. This warranty applies to the original purchaser only.
- Finish is warranted not to wear through from commercial traffic for a period of 5 years. Gloss reduction is not considered wear-through; therefore, it is not covered under this warranty.

### STRUCTURAL WARRANTY

- 5 years from date of purchase. All commercially rated products are warranted not to separate due to internal glue bond failure only. Cupping, warping, buckling, etc. are not covered under this warranty. Product exposed to adverse conditions or relative humidity levels outside of Architectural Systems recommended range of 35-55% will void this warranty.

## TECHNICAL DATA

Please contact [sales@archsystems.com](mailto:sales@archsystems.com)