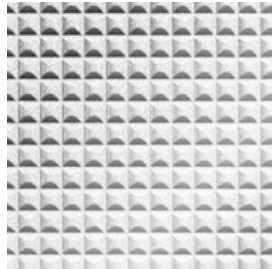


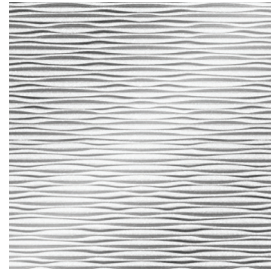
Structura® Eco-Panels



Rethink decorative surfacing in the updated **Structura® Eco-Panels**. Redefining a lightweight, seamless and sustainable offering with modular and textured shapes, these distinctive designs are constructed from thermoplastic panels and are available with a paintable or scratch-resistant TuffCote™ finish in a power palette of colors. Easy to install, impact and abrasion resistant, low maintenance and Class A fire-rated, you can revamp the spectrum of unlimited design possibilities for focal walls when raising the design bar.



DSATM182



DSATM185



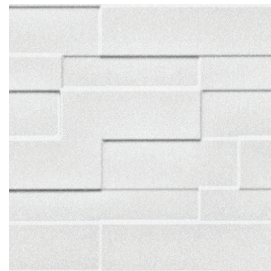
DSATM210



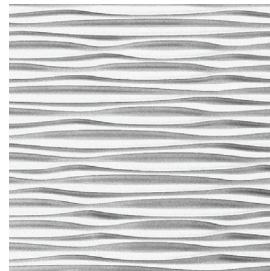
DSATM223



DSATM255



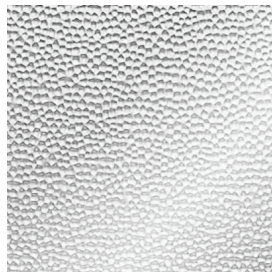
DSATM256



DSATM274



DSATM311



DSATM320



DSATM321



DSATM322



DSATM323

View collection web page for the complete offering including additional product options, corresponding Spec ID# and updates.

SPECIFICATIONS

SIZE: 4' x 8'; **DSATM323:** 4' x 10'; **Spec ID#'s are listed for paintable, see corresponding page when adding any color options**

THICKNESS: .03" - .04" nominal

FINISH: Paintable

BACKING: Self supporting rigid panels

INSTALLATION: Trowel on latex adhesives; Built In Overlap

APPLICATION: Walls, Architectural Millwork

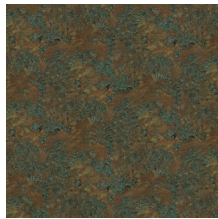
HEALTH AND WELLNESS: Cleanable with antiviral disinfectants

- Scratch and Stain Resistant
- Made in the USA
- Class A Fire Rated **upon request**
- Made from 40% post-consumer recycled content
- ISO Certified
- Phthalate - Free
- Can contribute to LEED®
- Please note that variations in color and texture may occur due to the nature of the material

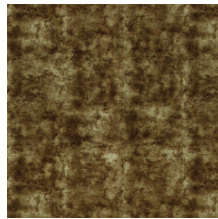
Structura[®] Eco-Panels - Colors



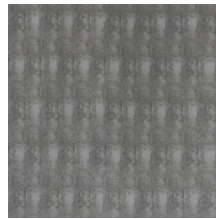
Select one of the twelve dimensional panels shown in the **Structura[®] Eco-Panels** collection to bring a bold new look with fresh high-style hues. Pair any color choice below for a dynamic, vibrant, sustainable, durable and cost-effective wall product solution! **Refer to the web page for corresponding Spec ID# when adding any color options.**



Vintage Rust



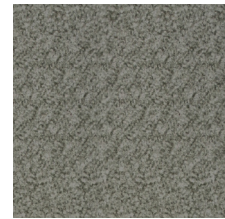
Mocha Stone



Crosshatch Chrome



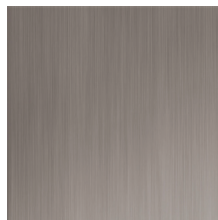
Antiqued Steel



Galvanized Metal



Silver



Nickel



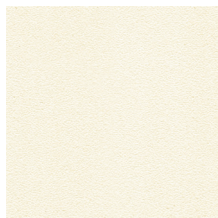
Titanium



Platinum



Bronze



Eggshell



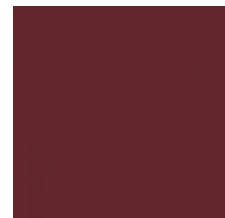
Espadrille



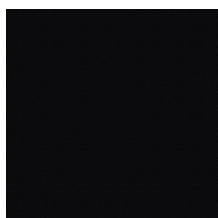
Polished Metal



Lilac



Pinot



Black



Light Oak



Medium Oak



Coffee

View collection web page for the complete offering including additional product options, corresponding Spec ID# and updates.

SPECIFICATIONS

SIZE: 4' x 8'; **Brick Pattern DSATM323:** 4' x 10'

FINISH: TuffCote™

BACKING: Self supporting rigid panels

INSTALLATION: Trowel on latex adhesives; Built In Overlap

COLORS: Contact sales@archsystems.com for custom or additional color options

APPLICATION: Walls, Architectural Millwork

- Scratch and Stain Resistant
- Made in the USA
- Class A Fire Rated **upon request**
- Made from 40% post-consumer recycled content
- ISO Certified
- Phthalate - Free
- Can contribute to LEED®
- Please note that variations in color and texture may occur due to the nature of the material

INSTALLATION METHOD

- Structura Eco-Panels are decorated deeply textured thermoplastic sheets with high impact resistance and are available in a wide variety of patterns and colors. They can be used as a value-added product in areas that vertical grade High Pressure Laminates (HPL) are typically used.
- Unlike HPL, Structura Eco-Panels can easily be cut to size with razor knives or scissors. It can also be applied to many substrates with pressure sensitive adhesive strips and be used for retrofits and DIY applications.
- Size - 4' x 8' x .032" (1220 x 2440 x .8 mm). This is a dimensional product, so actual thickness varies by pattern.
- Most product ships with clear protective film or with TuffCote™.

Storing:

Store flat and acclimatize in the same environment for at least 24 hours before fabrication.

Cutting/Fabricating:

Structura Eco-Panels can easily be cut to size with razor knife and scissors, saw blades, and drilling tools for thermoplastics. When fabricating Structura Eco-Panels, always cut from the decorated side, through the finish. Never cut from the back. If routing, always use a down spiral bit.

CAUTION:

All Structura Eco-Panels sheets being applied to surfaces with any recommended adhesive systems must be acclimatized.

- All components to be joined must be acclimatized for 24 hours prior to installation.
- Installation between 65° F and 80° F and humidity of 80% or less is necessary.
- For every 4-foot wide sheet an expansion space of 1/32" (8-foot sheet = 1/16") is necessary

Lamination:

Like HPL, Structura Eco-Panels sheets can be bonded with contact adhesive, but you must use a product compatible with PVC and the surface you are adhering to. We recommend water-based contact adhesives only.

Adhesives:

Trowel on latex adhesives are recommended for adhering Structura Eco-Panels sheets for wall applications. Brush-on or roller-on types, non-flammable, and water-based contact adhesives which are suitable for PVC, can also work well.

The following is meant as a guideline for adhesives that have been tested, and work well with Structura.

- Titebond® Fast Grab FRP
- Loctite® PL Premium
- Loctite® PL Premium Fast Grab
- DAP® Weldwood FRP
- 3M™ 77 (spray on aerosol)

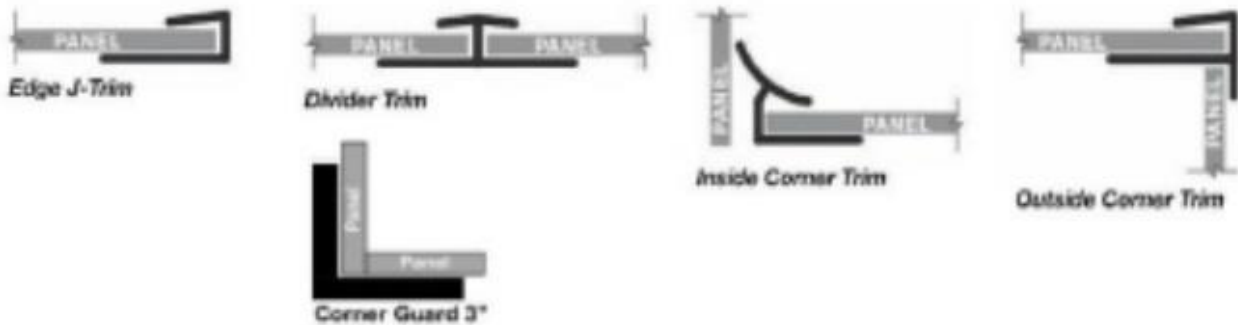
Cold Press Adhesives:

Structura Eco-Panels sheets may be laminated in a cold press using Wilsonart® 3310 adhesive or similar.

Pressure must be adjusted to the lowest amount that will produce an acceptable bond so that formed pattern will not be damaged. Pressure needed will vary with each structure pattern.

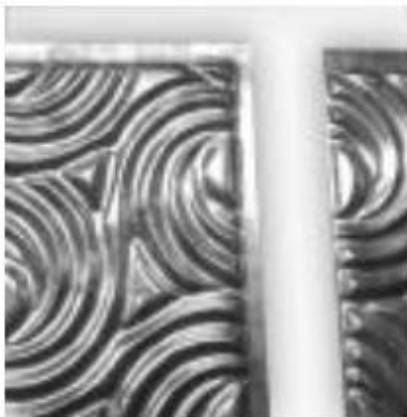
Trims and Seams:

Trims are available to join and finish Structura sheets. All Structura Eco-Panels wall panels come with a BIO, (Built-In-Overlap) which is a flat edge on the top and right of each panel, allowing the next panel to overlap and make the seam less visible. Inside corners, outside corners, edge trim, and universal trim strips are shown below.



Installation:

1. Before starting the installation, surface must be dry, smooth and free from dust, grease, wax, and other particles. *
2. Measure the area to be covered to determine how many panels you will need.
3. All trowel on FRP adhesives will have to be applied to the wall and not to the back of the panels.
4. Structura Eco-Panels Wall Panels are designed with a BIO (Built-In-Overlap), which is a flat edge on the top and right of each panel, allowing the next panel to overlap and make the seam less visible. Install panels from left to right, being sure the flat edge is always on the right. Certain Structura Eco-Panels patterns that do not have a BIO may have a Bead and Button feature. To install, overlap two or more sheets or tiles on the bead and button perimeter which will join at the pre-determined connection points.



5. After applying your selected adhesive to the wall, lay up your first panel applying even pressure to ensure the entire panel is in contact with the adhesive. Once the panel is fully adhered to the wall, gently remove the protective masking (if your panel came with it) as you hold it firmly against the wall. Make sure the panel is straight before you continue with the next one.

6. Repeat this process, working left to right. When finished, use the paint roller on an extension pole to apply additional pressure to the wall.

* The method you choose for cleaning prior to application must be compatible with the surface you are cleaning (e.g. denatured alcohol, degreaser, soap & water, TSP, Greased Lightning, etc.). Check the manufacturer's label directions for instructions on using the product.

Outlet Covers:

Some outlet covers (simple, inexpensive) can be covered with matching covers. To do this, peel the backing off of the outlet cover piece and lay flat, placing the sticky side up. Place the outlet cover centered and face down on the adhesive sheet. Using a utility knife, cut a square away from each corner. Fold the edge of the adhesive sheet over the outlet cover to create a seamless finish. Turn the cover over, and use a utility knife to carefully cut away the outlet openings.

Painting Guide:

Use recommended paints in accordance with manufacturer's recommendations. Due to the high chemical resistance of it, only certain paints adhere well. It is very important to use recommended paints to paint Structura Eco-Panels Gloss White Paintable.

STRUCTURA PAINTABLE PAINTING GUIDE

VENDOR	PRODUCT	PREP 1	PREP 2
Sherwin Williams	Acrolon 218HS	SSPC-SP1Solvent Cleaner	DTM Bonding Primer
Lowes	Signature Interior or American Tradition Exterior Duramax Paints	TSP Cleaner	Plastic Primer Spray
Benjamin Moore	Benjamin Moore Latex or Oil Paint	TSP Cleaner	Fresh Start Primer
Pratt & Lambert	Pratt & Lambert Latex Paint	Scuff Sanding/TSP Cleaner	Supreme Interior / Exterior Multi Purpose Primer

TECHNICAL INFORMATION

Technical Information	Test	Results
Fire Retardant	ASTM E-84	Class A
QUV		Minimum 100 hours
Solvent Resistance		50 MEK
MEK Double Rubs/Crockmeter		Withstands 70 cycles
Impact Resistance	ASTM D5420	>2 inch lbs per mill of thickness
Abrasion Resistance – Patina with TuffCote Argent Finishes	TABER	4,700* 5,000*

MAINTENANCE

Clean only with warm soapy water or a typical window cleaner. Never use abrasive cleaners.

WARRANTY

Architectural Systems warrants Structura Eco-Panels to the original consumer purchaser for one (1) year after date of purchase that, under normal use and service, Structura Eco-Panels products are free from manufacturing defects and conform to published specifications. Structura Eco-Panels products are intended for interior applications.

TECHNICAL DATA

Fire Rating Information:

Most Structura Eco-Panels sheets and ceiling tiles are fire rated and are designed to pass ASTM E 84 Class A.

Made from 40% pre-consumer recycled content