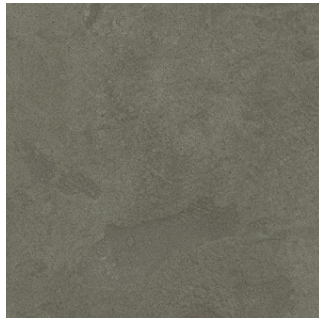
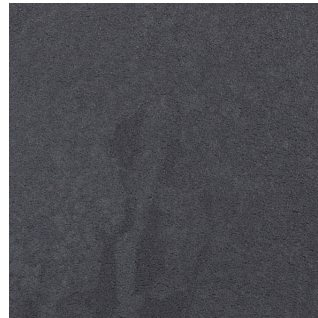


# ASI Concrete Vinyl Collection In Stock

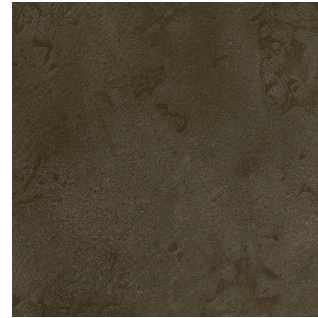
**ASI Concrete Vinyl Collection**, featuring a palette of earth-tone colors simulating the textured and monolithic effect of concrete flooring. Low-emitting and made of recycled content, the tiles are water-resistant and sound-absorbing. This 100% luxury vinyl is durable, easy to maintain and offers the advanced technology of a floating floor.



FLRGB008



FLRGB009



FLRGB075



FLRGB073



FLRGB074

View collection web page for the complete offering including additional product options, corresponding Spec ID# and updates.

## SPECIFICATIONS

**SIZE:** 12" x 24"

**THICKNESS:** 5 mil ( 3/16" nominal ) with 20 mil commercial wear layer

**FINISH:** G88 ceramic bead coating – **Anti-Bacterial** and **Anti-Fungal**

**INSTALLATION:** Glue-Down or Floating - Gravity Grip™ non-skid backing

**CONSTRUCTION:** Sound Absorbing, Non-slip and Stabilizing core layers

**HEALTH AND WELLNESS:** Antimicrobial coating

- Tiles are produced with square edge
- COF = Average .66
- Meets ASTM F-1700-04, Class III, Type B for Flammability – Embossed Surface
- 20 SF per carton
- 10-year limited warranty
- FloorScore® Certified for Indoor Air Quality
- 75% recycled content
- Can contribute to LEED®
- In Stock products are subject to availability
- Please note that variations in color and texture may occur due to the nature of the material

# INSTALLATION METHOD

## **What you need to get started**

1. Tools: Utility knife & straight edge, depending on application a small amount of vinyl adhesive or tape specified below.
2. Material Needed: Measure the length & width of your room. If the room has alcoves or offsets, measure these separately. This will give you the square footage of the room. Have a minimum of 10% extra to cover mistakes, trimming and for future needs and or replacement.

Check what the amount of Square Footage is for the package carton and divide it by the room dimensions factoring in the alcoves and offsets and adding in your overage to determine the correct number of cartons for your installation.

ASI Concrete Vinyl must be Condition Prior to installation: It must be stored at room temperature of at least 65 degrees Fahrenheit. For 24 to 48 hours before installation. Stack cartons no more than 3 high with at least 4" of airflow around not next to and heat or cooling ducts and direct sunlight.

When installing tiles and planks you should work out of a minimum of 3 boxes and mix planks or tiles when installing.

## **Subfloor Preparation**

While ASI Concrete Vinyl is suitable for situations where many other types of flooring should not be used, certain precautions should be observed including and not limited to:

1. Make sure you have a sound, solid subfloor with little flexibility.
2. Evaluate your concrete floor if it has a moisture problem, Fix It! Hydrostatic pressure and/or High PH need to be addressed. It can create a highly corrosive substance that no flooring product can tolerate. There are many products on the market that can seal the concrete and protect ASI Concrete Vinyl from this issue. Polyurethane sheets can be used, as a precaution once the concrete floor has been tested not a solution for a problem. Our limits for the best precautions are as follows:
  - 8 lbs. using a Calcium Chloride Dome test using ASTM test methods or a RH reading of 85%, using ASTM RH relativity test methods and/or a PH higher than 9
3. Fill any large cracks, nail holes or voids, which must be filled with a Portland base patching compound. Concrete and wood subfloors should be flat within 3/16" in 10 FT.
4. Check environment! Keep clean and dust free work conditions during installation. The room temperature and the sub floor temperature should be between 65° and 85 ° Fahrenheit. Maintain proper temperature for 48 hours before, during and after installation. The building's heating and air-conditioning system should be turned on at least one to two weeks before installation. ASI Luxury Vinyl is an interior product only, and must be installed in a temperature-controlled environment, maintained between 65- and 85-degrees F. Please keep in mind a concrete floor can be up to ten degrees colder than the actual room temperature.

## **Subfloor Compatibility**

**All Levels of Concrete:** Lightweight concretes are approved and Wood Subfloors. All other subfloors, i.e. particleboard, OSB, chipboard, wafer board, Gypsum Underlayment and Floor Toppings etc. must be sturdy, flat, and have little flexibility and manufacturers installation specifications need to be followed.

**Caution:** Soft underlayment and Substrates can diminish ASI Concrete Vinyl's inherent strength ***in resisting indentations.***

Quarry tile, terrazzo, and ceramic tile need to be floated and grout joints filled with a high-quality Portland base cement product.

For Radiant heat components must be a minimum of 1/2" separated from ASI Concrete Vinyl flooring. This is the only type of radiant heat that is approved.

Subfloors should have been operational for at least 3 weeks prior to installation to drive out moisture and calibrate temperature settings. All radiant heat floors should be turned down, so subfloor temperature is maintained at 65 degrees for 3 days prior to installation and kept at 65 degrees for at least 48 hours after installation to allow the adhesive to fully cure. Maximum operating temperature should never exceed 85°F.

Existing resilient tile and sheet vinyl floors are ok but must be in good condition and fully bonded to the structural floor. All existing vinyl needs to be stripped and cleaned of all wax and heavily embossed vinyl should be floated with a high-quality Portland based cement. Any tile or sheet that is of a soft cushion construction must be removed. For all removal of any resilient glue down product follow RFCI's recommended Work Practices for removal of resilient floor covering. These products may contain asbestos fibers and/or crystalline silica. Do not sand or bead blast during removal. Please visit RFCI.com for advice on vinyl installations if needed. ***Note: A layer of resilient or soft underlayment like lauan may compromise the inherent strength of ASI Concrete Vinyl. Do not install over more than one layer of existing flooring, to prevent indentations.***

ASI Concrete Vinyl is water/moisture resistant and does not support mold or mildew. However, excessive moisture in the subfloor can cause mold, mildew, and other moisture related issues like the trapping of moisture emissions under ASI Concrete Vinyl. This will cause an adverse effect on existing glue down substrates causing it to release.

Check for any dips in the subfloor that can create a void underneath the floor that will cause stress on the plank seams when walking on it. ASI Concrete Vinyl is water resistant, so it can be installed directly over concrete floors in the basement, (Refer to Subfloor preparation on page 1). If your concrete floor has any bumps or burrs of concrete sticking up, simply knock them off with a hammer and chisel and fill in the holes.

## **Installation**

1. Installation of ASI Concrete Vinyl: Measure out your room and determine the length and width of the perimeter plank or tile keeping a balanced perimeter row on each side of the room. ASI Concrete Vinyl is very easy to cut by scoring with a sharp blade and snapping or a vinyl cutter. Avoid small perimeter pieces less than 6 inches in length and 3 inches in width.
2. Check the walls and make sure it is square to the opposite wall if not you can scribe the plank or tile on the edge that goes against the wall to create a straight square-starting row. Never expose scribe or cut ends they should always be covered by molding.
3. Installation should start at corner of the room and work your way out. The perimeter needs to be secured for ***ALL installations*** to lock remainder of floor in place. Glue the whole perimeter using a Pressure Sensitive Adhesive. Create at least a perimeter row a little more than the width of two planks or the width of one tile for installation of ASI Concrete Vinyl. Glue under all walkway entrances and under heavy appliances and furniture. Leave an expansion space from wall at least 1/8th inch covered by molding. The recommended Pressure Sensitive Adhesive to accomplish this is Gravity Grip Spray Locking Adhesive or ASI Vinyl Trowel Adhesive. Follow all instructions on can or bucket.
4. Once the starting perimeter row is in place just lay your plank or tiles down and adjust all side and end seams tight and square to each other. The best part to ASI Concrete Vinyl installation is that you can just pull up and reposition a tile or plank if it does not look right. Avoid walking on tile or planks as much as possible until all the perimeter tiles or planks are in place to lock in the installation. For planks make sure you stagger the rows with different size planks, so the ends of the planks do not line up in a straight uniform line. No starting row piece or end piece should be less than 6 inches and a random staggered method is best. For 12" x 24" tile and ASI Concrete Vinyl tiles an offset method is best.
5. Start first perimeter row with a full tile then next row with a half tile then alternating though out installation. A point-to Point installation with each corner of the tile together is warranted but not the preferred method. For your typical residential installations only, you can use a heavy-duty double face tape to secure the perimeter planks or tile from moving. First remove the paper from one side and secure tape to the back of the tile or plank. Then remove paper and place tile or plank to floor. The acceptable amount of tape is 3 rows running length wise down plank if using 2-inch wide tape and 5 rows for tile.
6. For installations in large rooms for ASI Concrete Vinyl a reinforcement perimeter of the specified adhesive row width should be sprayed or spread every 15 Feet creating a grid pattern on the floor. For Loft this should be done every 10 Feet.
7. For cutting around irregular objects make a pattern out of heavy paper to fit around the object then place and trace the pattern upon the plank and cut along the lines with a utility knife or heavy-duty scissors and lay the plank. For any reason you need to replace a plank that is damaged just pull up the plank and put another in its place it's that easy.

# Maintenance

Maintenance for ASI Concrete Vinyl Planks is as Easy as 1-2-3- Sweep, Vacuum and Mop floor regularly! Our strong durable ceramic coating will protect your floor for many years. Follow the precautions below for keeping your floor looking good for years to come. Use, plastic, glass or other non-staining cups with flat under surfaces not less than 2 inches in diameter for legs of heavy appliances and furniture. Use proper floor protectors on all chairs. Remove all small diameter buttons from legs of straight chairs and replace with medal glides no smaller than 1 inch in diameter. Examine your protectors periodically, check for burs or debris or wear make sure, the surface is smooth. Do not drag any types of furniture across your floor! These precautions will prevent scratches and indentations from appearing on your floor. Avoid rolling type caster wheels on chairs and/or heavy objects if possible. If not make sure the rollers are the double type wheels at least 2" in diameter. This will help disperse the weight properly to prevent any issues with Dynamic Load, which is the effect of heavy rolling objects that are not stationary. Heavy weighted loads that are not properly dispersed can put a strain on flooring material to move. If exposed to this the best solution is to glue these areas with us recommended Spray Locking Adhesive, which will eliminate any potential issues. Do not expose floor to frequent standing water and wipe up all spills quickly. Watch for tracked in dirt and grit particles. Use walk off mats at all room entrances. Do not use rubber or latex back mats. Certain chemicals in backing can stain vinyl. Use Non-staining vinyl mats or woven rugs that are colorfast. Avoid exposure to direct sunlight for prolong periods. The use of drapes and blinds are recommended. Direct sunlight over long period can cause discoloration.

No finishes are needed. ASI Concrete Vinyl has a strong permanent ceramic finish. Do not use any type of floor wax, harsh detergent or solvents like lacquer thinner, abrasive cleaners or Mop and Shine type products, which can leave a film. Avoid vinegar as a cleaning agent. Use cleaners that are recommended for vinyl. The use of steam mops is ok. Do not use vacuums with beater bars.

## **Commercial Installations:**

Follow same recommendations as above. Daily sweeping, dust mopping or vacuuming will prevent dirt and grit particles from being grounded into surface of plank or tile. The amount of foot traffic will dictate your maintenance program but washing the floor by damp mopping and use of an auto scrubber should be part of the program. Heavy use and extremely dirty floors should be scrubbed with a 175-300RPM-floor buffer. No Scrubber or Buffer can exceed 300 RPM! A red type pad should be used for scrubbing and a white pad for buffing. Suitable made for vinyl-cleaning products should be used.

1. For ASI Concrete Vinyl the following Commercial Maintenance instructions should be followed. Instead of an Auto scrubber with red pad a Carpet Cleaning Machine equipped with Soft Bristle rollers should be used.
2. Fill the water tank section with a solution of warm water and a Neutral PH Vinyl cleaner. Wash in straight lines along the length of the flooring when possible.
3. With each new passage, overlap the previous one by about a third of the width of the cleaning nozzle to avoid leaving and traces behind.
4. After washing is complete immediately go back over the areas you washed without interjecting any cleaning solution and just use the extraction mode to clean up cleaning solution.
5. Repeat the same cleaning process with just plain water to rinse the floor.

# WARRANTY

See Technical Specs below

## TECHNICAL DATA

### Product Specifications / Technical Data

#### Collection Name: Concrete Vinyl

Composition:	Vinyl – Gravity Grip
Size (inches / mm):	12" x 24" (304.8 x 609.6mm)
Gauge:	1/5" (5.0mm)
Wear Layer:	20mil (.5mm)
Finish:	G88 Advanced Coating System
Edge:	Square
Sq.Ft. / Piece:	2
Sq.Ft. / Carton:	20
Pieces / Carton:	10
Cartons / Pallet:	48 (960 sq.ft.)
Pallets / 20' Container:	20 (19,200 sq.ft.)
Weight / Carton:	35lbs
Limited Warranty:	15 Year Commercial
<b>ASTM Testing</b>	
ASTM F1700 – Product Classification:	Class III, Type B, Embossed Surface Meets and exceeds passing requirements
ASTM E648 – Radiant Panel (Critical Radiant Flux-Fire Rating Flaming Spread):	Meets and exceeds passing requirements (Class 1) Meets and exceeds passing requirements for ADA and OSHA Guidelines (>.6)
Slip Resistance:	Meets and exceeds passing requirements
ASTM F925 – Resistance to Chemicals:	Meets and exceeds passing requirements
ASTM E492 - Impact Sound Insulation Acoustical Testing (IIC)	57 IIC – Over 6" thick concrete slab with drop ceiling
ASTM E2192 – Impact Sound Insulation Acoustical Testing (Delta)	18 IIC Delta – Over 6" thick concrete slab
ASTM F970 - Static Load Limit:	Meets and exceeds passing requirements (1,000 PSI-Modified)
<b>Sustainability</b>	
Recycled Content:	Yes
ISO 9001 – Quality Management System:	Meets and exceeds passing requirements
ISO 14001 – Environmental Management System:	Meets and exceeds passing requirements
FloorScore® Certified:	Yes
Environmental Product Declaration, EPD® (SCS Global Services):	Verified